

MT. CLEMENS, MICHIGAN

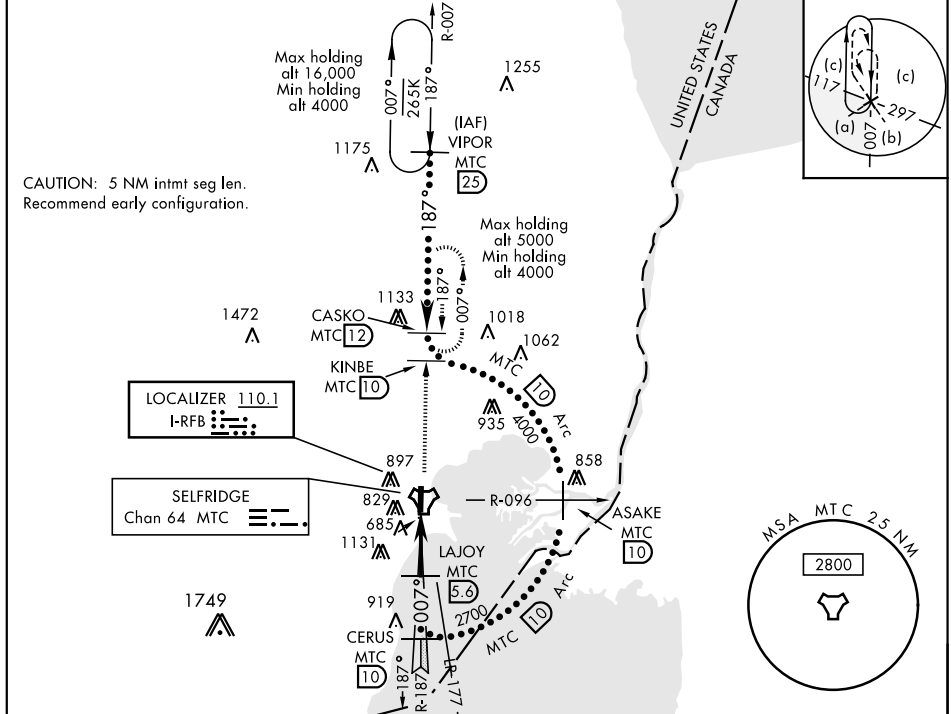
HI-ILS or LOC/DME RWY 1

LOC I-RFB 110.1	APCH CRS 007°	Rwy ldg THRE Arpt Elev 9000 579 580	JAL-276 [USAF]	SELFRIDGE ANGB (KMTC)
---------------------------	-------------------------	---	----------------	-----------------------

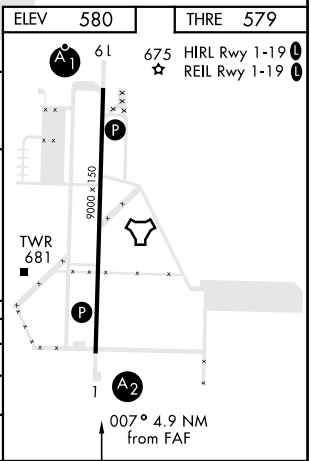
▼ * When ALS inop, increase RVR to 50 and vis to 1 mile.
 ** When ALS inop, increase vis to 1 3/8 miles.
 *** Circling not authorized W of Rwy 1-19.

A2 MISSED APPROACH: Climb to 4000 on MTC R-007 to CASKO and hold, continue climb-in-hold to 4000.

ATIS 125.325 270.1	SELFRIDGE APP CON 119.6 318.2	SELFRIDGE TOWER ★ 120.15(CTAF) 225.4	GND CON 128.3 275.8	CLNC DEL 128.3 275.8
------------------------------	---	--	-------------------------------	--------------------------------



	VIPOR R-007 (25)	KINBE (10)	ASAKE R-096 (10)	CERUS (10)	LAJOY (5.6)	CASKO (2)	TACAN	CUBEN (7)
	16,000	4000	2700	2200	2200	4000		
	GS 3.00° TCH 52		10 Arc		4.9 NM			
CATEGORY	C		D		E			
S-ILS/DME 1*	907/40		328 (400-3/4)					
S-LOC/DME 1**	1060/60		481 (500-1 1/2)					
CIRCLING ***	1120-1 1/2 541 (600-1 1/2)		1140-2		561 (600-2)			



MT. CLEMENS, MICHIGAN 42° 36' N-82° 50' W SELFRIDGE ANGB (KMTC)

Amr 2 23AUG12

HI-ILS or LOC/DME RWY 1

EC-1, 12 SEP 2019 to 10 OCT 2019

EC-1, 12 SEP 2019 to 10 OCT 2019