

# HI-ILS or LOC/DME RWY 19

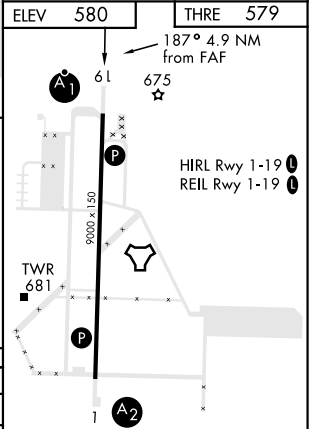
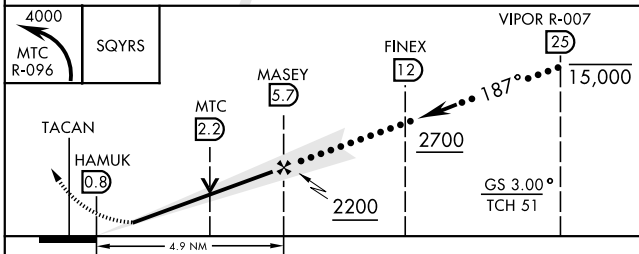
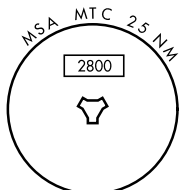
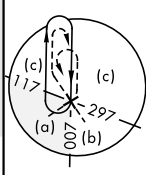
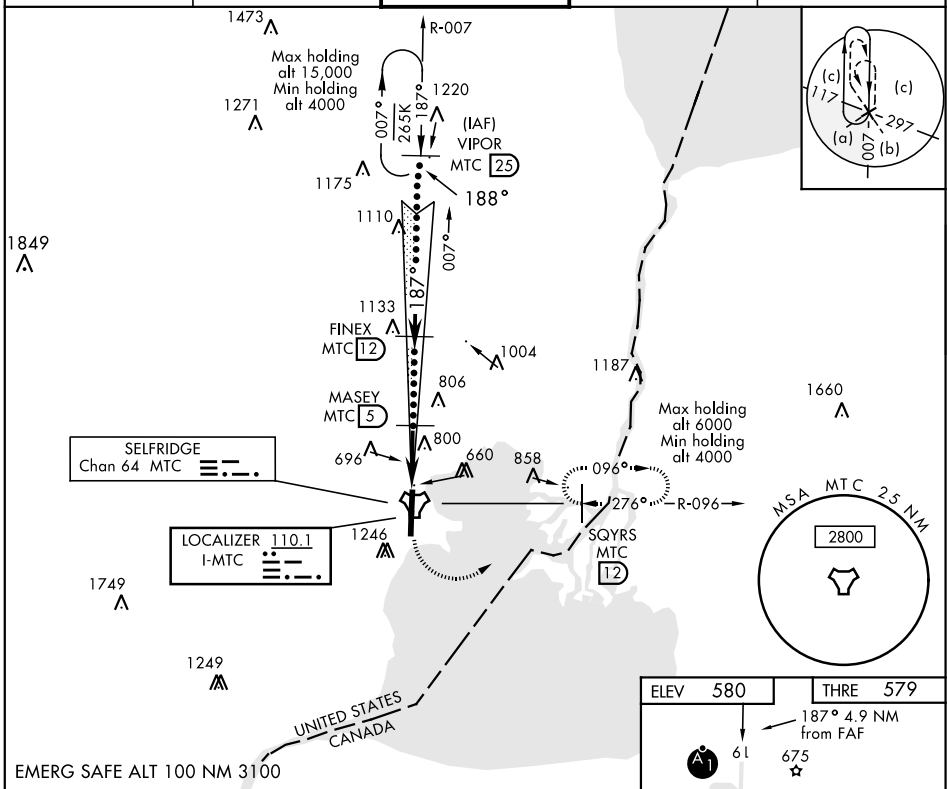
LOC I-MTC <b>110.1</b>	APCH CRS <b>187°</b>	Rwy Idg THRE Arprt Elev <b>9000</b> <b>579</b> <b>580</b>	JAL-276 [USAF]	SELFRIDGE ANGB (KMTC)
---------------------------	-------------------------	--	----------------	-----------------------

▼ \*\*When ALS inop, increase RVR to 55, vis to 1 mile.  
 \*\*\*When ALS inop, increase vis to 1½ miles.  
 \*\*\*Circling not authorized W of Rwy 1-19.



MISSED APPROACH: Climbing left turn to 4000, intercept MTC R-096 to SQYRS and hold, continue climb-in-hold to 4000.

ATIS <b>125.325 270.1</b>	SELFRIDGE APP CON <b>119.6 318.2</b>	SELFRIDGE TOWER ★ <b>120.15(CTAF) 0 225.4</b>	GND CON <b>128.3 275.8</b>	CLNC DEL <b>128.3 275.8</b>
------------------------------	---	--	-------------------------------	--------------------------------



CATEGORY	C	D	E
S-ILS 19*	923/40	344 (400-¾)	
S-LOC 19**	1080/55	501 (600-1)	
CIRCLING***	1120-1½ 541 (600-1½)	1140-2	561 (600-2)

FAF to MAP 4.9 NM					
Knots	120	140	160	180	200
Min:Sec	2:27	2:06	1:50	1:38	1:28

# HI-ILS or LOC/DME RWY 19

EC-1, 12 SEP 2019 to 10 OCT 2019

EC-1, 12 SEP 2019 to 10 OCT 2019