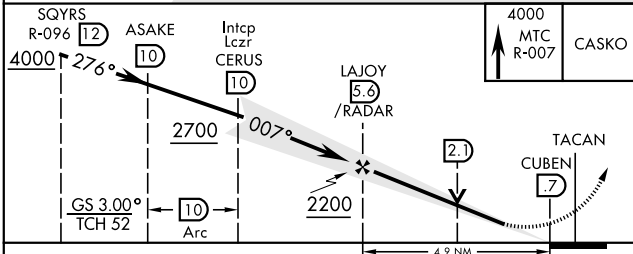
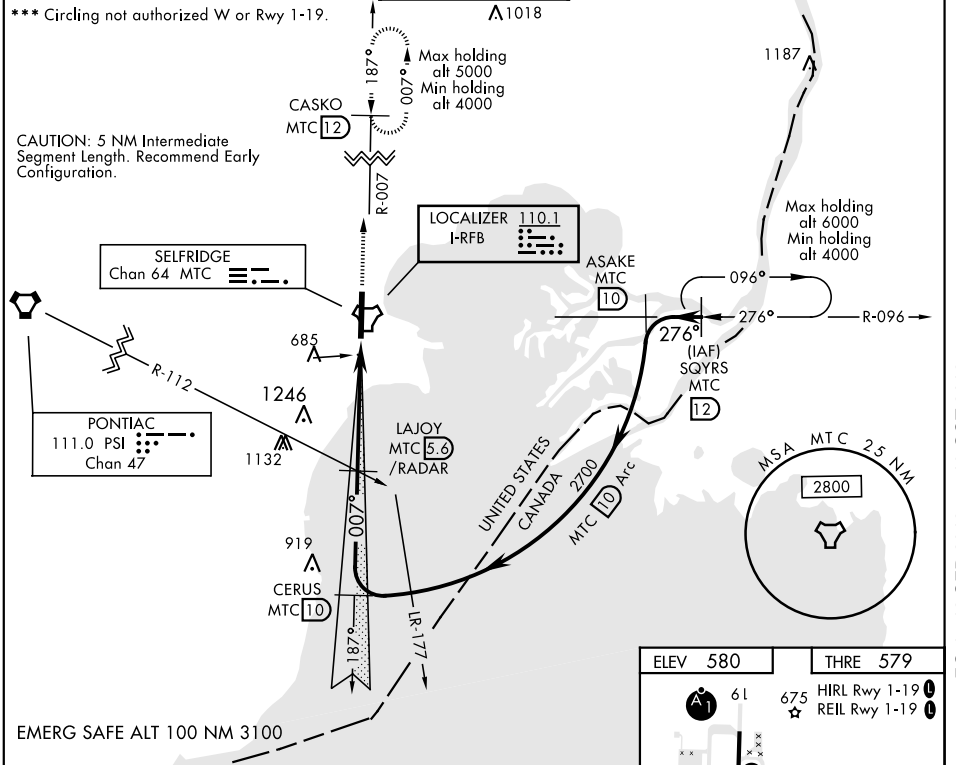


MT. CLEMENS, MICHIGAN

ILS or LOC/DME RWY 1

LOC I-RFB 110.1	APCH CRS 007°	Rwy Idg THRE 579 Arpt Elev 580	AL-276 [USAF]	SELFRIDGE ANGB (KMTC)
▼* When ALS inop, increase RVR to 50, vis to 1 mile. ** When ALS inop, increase CAT AB RVR to 55 and vis to 1 mile CAT CDE vis to 1½ miles.			SALS A2	MISSED APPROACH: Climb to 4000 on MTC R-007 to CASKO and hold, continue climb-in-hold to 4000.

ATIS 125.325 270.1	SELFRIDGE APP CON 119.6 318.2	SELFRIDGE TOWER ★ 120.15(CTAF) 225.4	GND CON 128.3 275.8	CLNC DEL 128.3 275.8
------------------------------	---	--	-------------------------------	--------------------------------



ELEV 580	THRE 579
	61 675 HIRL Rwy 1-19 REIL Rwy 1-19 TWR 681 9000 x 1.50 007° 4.9 NM from FAF A2
FAF to MAP 4.9 NM	
Knots	60 90 120 150 180
Min:Sec	4:54 3:16 2:27 1:58 1:38

MT. CLEMENS, MICHIGAN

42°36'N-82°50'W

SELFRIDGE ANGB (KMTC)

Amdt 3 23AUG12

ILS or LOC/DME RWY 1

EC-1, 12 SEP 2019 to 10 OCT 2019

EC-1, 12 SEP 2019 to 10 OCT 2019