

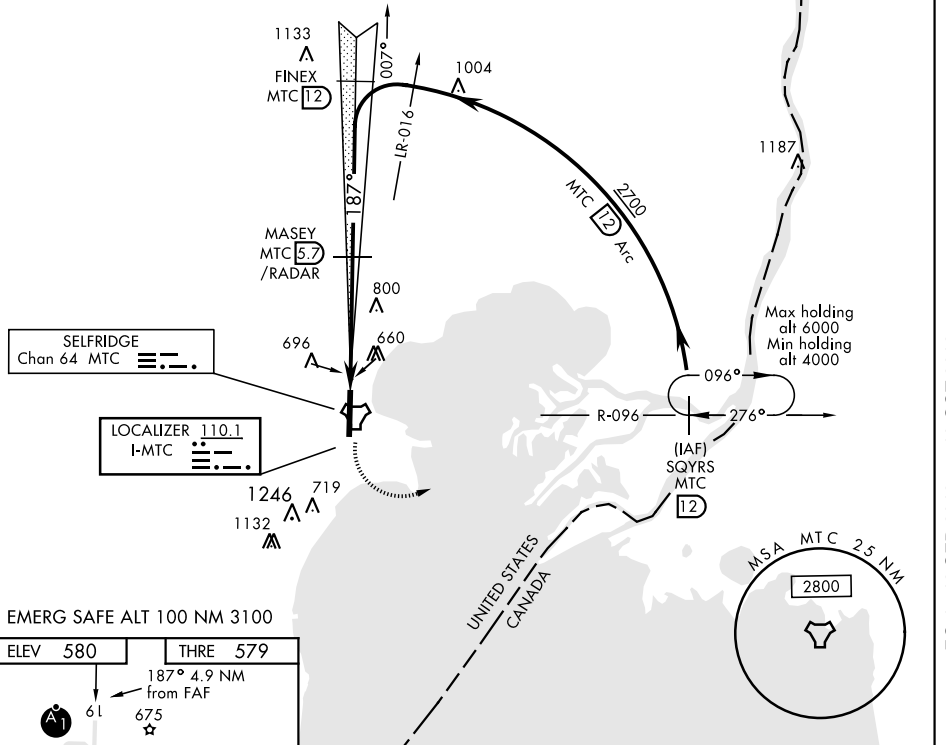
MT. CLEMENS, MICHIGAN

ILS or LOC/DME RWY 19

LOC I-MTC 110.1	APCH CRS 187°	Rwy Idg THRE Arpt Elev 9000 579 580	AL-276 [USAF]	SELFRRIDGE ANGB (KMTC)
* When ALS inop, increase RVR to 55, vis to 1 mile. ** When ALS inop, increase CAT AB RVR to 55, vis to 1 mile, CAT CDE vis to 1½ miles.			ALSF-1	MISSED APPROACH: Climbing left turn to 4000, intercept MTC R-096 to SQYRS and hold, continue climb-in-hold to 4000.

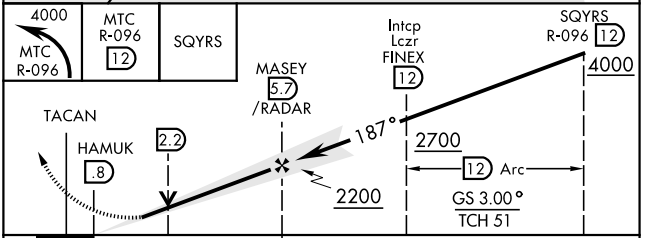
ATIS 125.325 270.1	SELFRRIDGE APP CON 119.6 318.2	SELFRRIDGE TOWER * 120.15(CTAF) 225.4	GND CON 128.3 275.8	CLNC DEL 128.3 275.8
------------------------------	--	---	-------------------------------	--------------------------------

*** Circling not authorized W of Rwy 1-19.



EMERG SAFE ALT 100 NM 3100

ELEV 580	THRE 579
187° 4.9 NM from FAF	
TWR 681	
FAF to MAP 4.9 NM	
Knots	60 90 120 150 180
Min:Sec	4:54 3:16 2:27 1:58 1:38



CATEGORY	A	B	C	D	E
S-ILS 19*	923/40		344	(400-¾)	
S-LOC 19**	1080/40	501 (600-¾)	1080/55	501 (600-1)	
CIRCLING ***	1120-1	541 (600-1)	1120-1½	541 (600-1½)	1140-2 561 (600-2)

MT. CLEMENS, MICHIGAN

42°36'N-82°50'W

SELFRRIDGE ANGB (KMTC)

Amtd 3 23AUG12

ILS or LOC/DME RWY 19

EC-1, 12 SEP 2019 to 10 OCT 2019

EC-1, 12 SEP 2019 to 10 OCT 2019