

(KAYLN2.KAYLN) 19227

# KAYLN TWO DEPARTURE (RNAV)

AL-276 (FAA)

SELFRIDGE ANGB (MTC)  
MOUNT CLEMENS, MICHIGAN

EC-1, 12 SEP 2019 to 10 OCT 2019

**TOP ALTITUDE:  
ASSIGNED AT ATC**

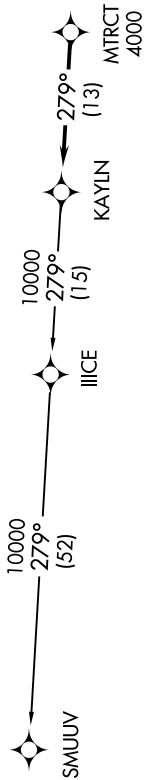
TAKEOFF MINIMUMS:

Rwy 1: Standard.

Rwy 19: Standard with minimum climb of 234' per NM to 1500.

ATIS 125.325 270.1  
CLNC DEL 128.3 275.8  
GND CON 128.3 275.8  
SELFRIDGE TOWER \* 120.15 225.4  
SELFRIDGE DEP CON 119.6 391.9

187° ← → 007°



- NOTE: RNAV 1.
- NOTE: RADAR required.
- NOTE: DME/DME/IRU or GPS required.
- NOTE: Turbojet departures at/above 10000, maintain 280K until advised by ATC.

NOTE: Chart not to scale.

## DEPARTURE ROUTE DESCRIPTION

TAKEOFF RUNWAY 1: Climb on heading 007° or as assigned for RADAR vectors to cross MTRCT at or above 4000, thence....  
TAKEOFF RUNWAY 19: Climb on heading 187° or as assigned for RADAR vectors to cross MTRCT at or above 4000, thence....

....on track 279° to KAYLN, then on (transition). Maintain ATC assigned altitude, expect filed altitude 10 minutes after departure.

SMUUV TRANSITION (KAYLN2.SMUUV):

# KAYLN TWO DEPARTURE (RNAV)

(KAYLN2.KAYLN) 15AUG19

MOUNT CLEMENS, MICHIGAN  
SELFRIDGE ANGB (MTC)

EC-1, 12 SEP 2019 to 10 OCT 2019