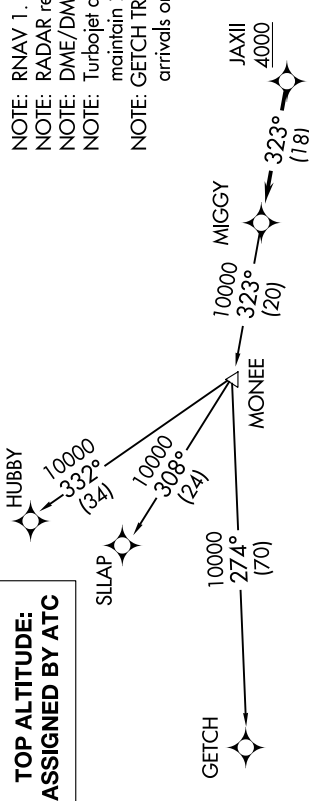
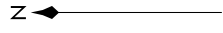
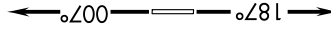


ATIS
125.325 270.1
CLINC DEL
128.3 275.8
GND CON
128.3 275.8
SELFRIIDGE TOWER *
120.15 225.4
SELFRIIDGE DEP CON
119.6 391.9

NOTE: RNAV 1.
NOTE: RADAR required.
NOTE: DME/DME/IRU or GPS required.
NOTE: Turbojet departures at/above 10000, maintain 280K until advised by ATC.
NOTE: GETCH TRANSITION: For use by KMKE area arrivals only, or as assigned by ATC.



**TOP ALTITUDE:
ASSIGNED BY ATC**



TAKEOFF MINIMUMS:
Rwy 1: Standard.
Rwy 19: Standard with minimum climb of 234' per NM to 1500.

NOTE: Chart not to scale.

DEPARTURE ROUTE DESCRIPTION

TAKEOFF RUNWAY 1: Climb on heading 007° or as assigned for RADAR vectors to cross JAXII at or above 4000, thence...

TAKEOFF RUNWAY 19: Climb on heading 187° or as assigned for RADAR vectors to cross JAXII at or above 4000, thence...

....on track 323° to MIGGY, then on (transition). Maintain ATC assigned altitude, expect filed altitude 10 minutes after departure.

GETCH TRANSITION (MIGGY2.GETCH):
HUBBY TRANSITION (MIGGY2.HUBBY):
SILAP TRANSITION (MIGGY2.SILAP):