

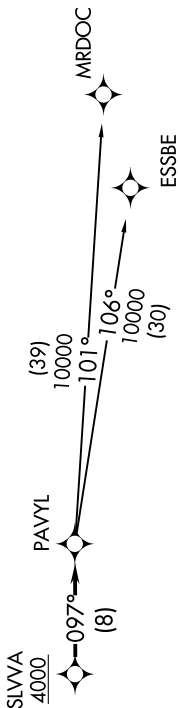
EC-1, 12 SEP 2019 to 10 OCT 2019

**TOP ALTITUDE:
ASSIGNED BY ATC**



NOTE: RNAV 1.
NOTE: RADAR required.
NOTE: DME/DME/IRU or GPS required.
NOTE: Turbojet departures at/above 10000, maintain 280K until advised by ATC.

ATIS
125.325 270.1
CLINC DEL
128.3 275.8
GND CON
128.3 275.8
SELFRIDGE TOWER *
120.15 225.4
SELFRIDGE DEP CON
119.6 391.9



TAKEOFF MINIMUMS:

Rwy 1: Standard.
Rwy 19: Standard with minimum climb
of 234' per NM to 1500.

NOTE: Chart not to scale.

DEPARTURE ROUTE DESCRIPTION

TAKEOFF RUNWAY 1: Climb on heading 007° or as assigned for RADAR vectors to cross SLWA at or above 4000, thence....
TAKEOFF RUNWAY 19: Climb on heading 187° or as assigned for RADAR vectors to cross SLWA at or above 4000, thence....

.....on track 097° to PAVYL, then on (transition). Maintain ATC assigned altitude, expect filed altitude 10 minutes after departure.

ESSBE TRANSITION (PAVYL2.ESSBE):
MRDOC TRANSITION (PAVYL2.MRDOC):

EC-1, 12 SEP 2019 to 10 OCT 2019