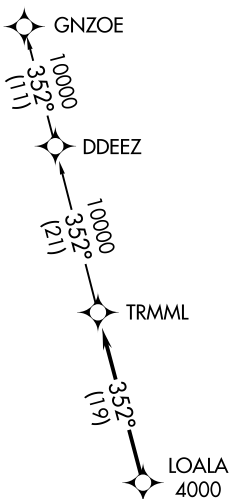


**TOP ALTITUDE:
ASSIGNED BY ATC**

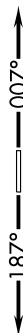


ATIS
125.325 270.1
CLNC DEL
128.3 275.8
GND CON
128.3 275.8
SELFRIDGE TOWER ★
120.15 225.4
SELFRIDGE DEP CON
119.6 391.9

TAKEOFF MINIMUMS:

Rwy 1: Standard.
Rwy 19: Standard with minimum climb
of 234' per NM to 1500.

NOTE: RNAV 1.
NOTE: RADAR required.
NOTE: DME/DME/IRU or GPS required.
NOTE: Turbojet departures at/above 10000,
maintain 280K until advised by ATC.



NOTE: Chart not to scale.



DEPARTURE ROUTE DESCRIPTION

TAKEOFF RUNWAY 1: Climb on heading 007° or as assigned for RADAR vectors to cross LOALA at or above 4000, thence....

TAKEOFF RUNWAY 19: Climb on heading 187° or as assigned for RADAR vectors to cross LOALA at or above 4000, thence....

....on track 352° to TRMML, then on (transition). Maintain ATC assigned altitude, expect filed altitude 10 minutes after departure.

GNZOE TRANSITION (TRMML2.GNZOE):