

(ZETTR2.ZETTR) 19227

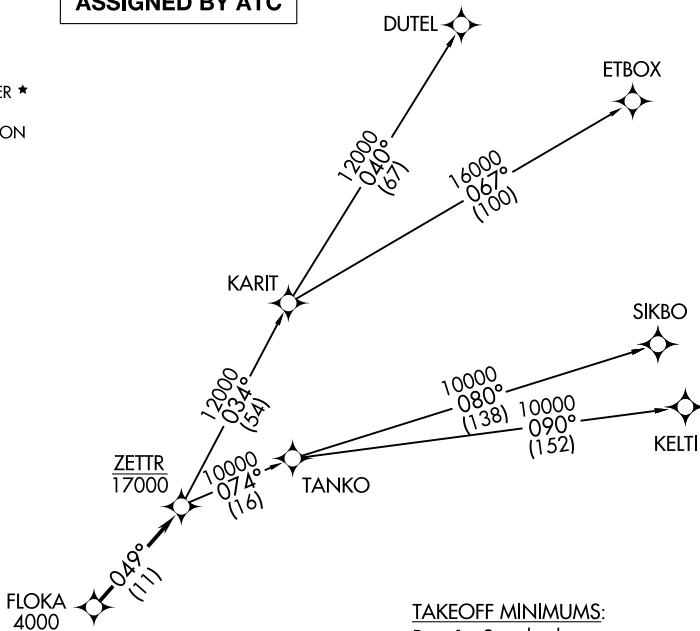
ZETTR TWO DEPARTURE (RNAV)

AL-276 (FAA)

SELFRIDGE ANGB (MTC)
MOUNT CLEMENS, MICHIGAN

ATIS
125.325 270.1
CLNC DEL
128.3 275.8
GND CON
128.3 275.8
SELFRIDGE TOWER ★
120.15 225.4
SELFRIDGE DEP CON
119.6 391.9

**TOP ALTITUDE:
ASSIGNED BY ATC**



TAKEOFF MINIMUMS:

Rwy 1: Standard.

Rwy 19: Standard with minimum climb of 234' per NM to 1500.

▼ DEPARTURE ROUTE DESCRIPTION

TAKEOFF RUNWAY 1: Climb on heading 007° or as assigned for RADAR vectors to cross FLOKA at or above 4000, thence....
TAKEOFF RUNWAY 19: Climb on heading 187° or as assigned for RADAR vectors to cross FLOKA at or above 4000, thence....

...on track 049° to cross ZETTR at or below 17000, then on (transition). Maintain ATC assigned altitude, expect filed altitude 10 minutes after departure.

- DUTEL TRANSITION (ZETTR2.DUTEL):
- ETBOX TRANSITION (ZETTR2.ETBOX):
- KELTI TRANSITION (ZETTR2.KELTI):
- SIKBO TRANSITION (ZETTR2.SIKBO):
- TANKO TRANSITION (ZETTR2.TANKO):

- NOTE: RNAV 1.
- NOTE: RADAR required.
- NOTE: DME/DME/IRU or GPS required.
- NOTE: Turbojet departures at/above 10000, maintain 280K until advised by ATC.
- NOTE: TANKO TRANSITION: For use by CYYZ area arrivals only, or as assigned by ATC.

NOTE: Chart not to scale.

ZETTR TWO DEPARTURE (RNAV)
(ZETTR2.ZETTR) 15AUG19

MOUNT CLEMENS, MICHIGAN
SELFRIDGE ANGB (MTC)

EC-1, 12 SEP 2019 to 10 OCT 2019

EC-1, 12 SEP 2019 to 10 OCT 2019