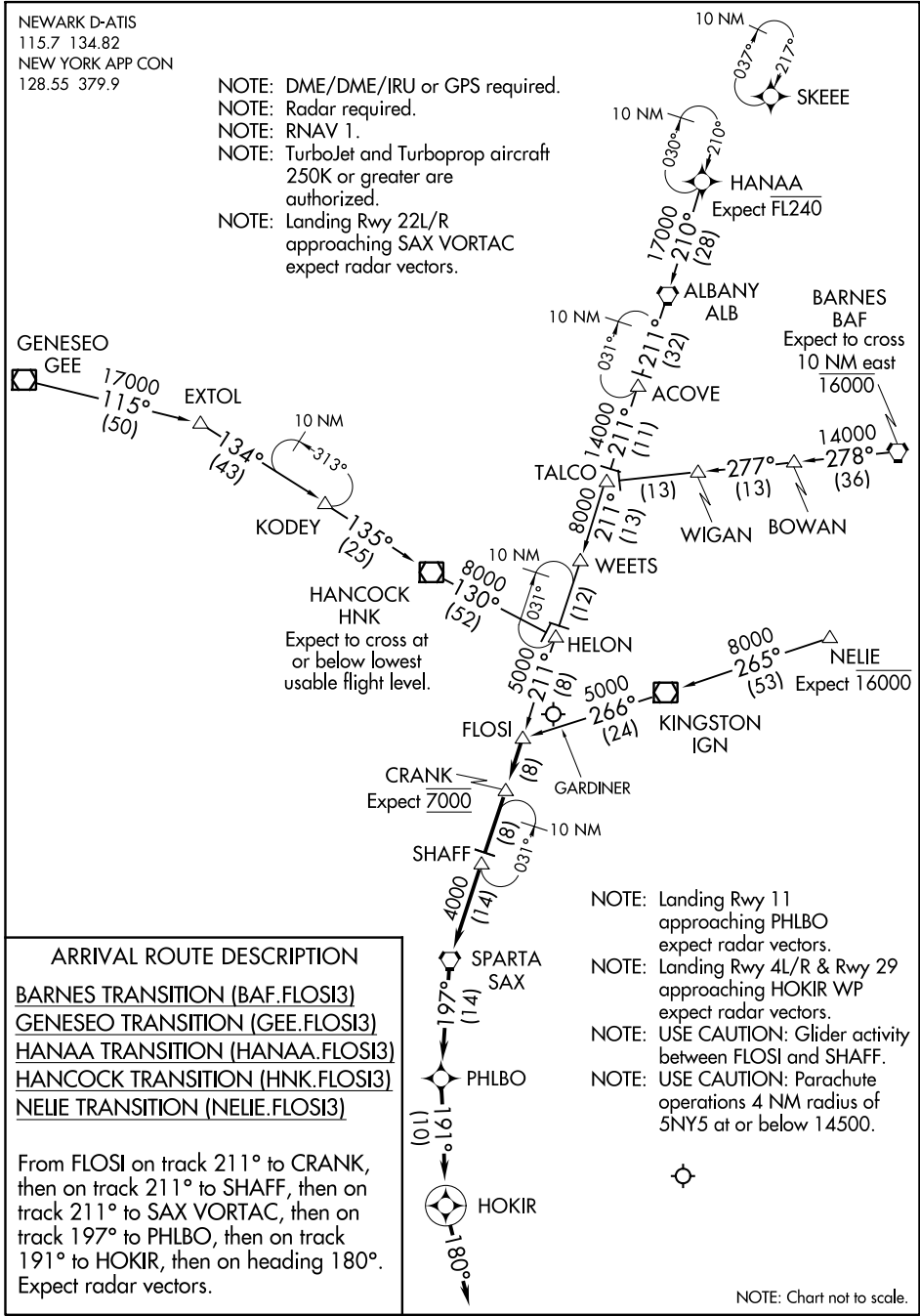


# FLOSI THREE ARRIVAL (RNAV)

NEWARK D-ATIS  
115.7 134.82  
NEW YORK APP CON  
128.55 379.9

- NOTE: DME/DME/IRU or GPS required.
- NOTE: Radar required.
- NOTE: RNAV 1.
- NOTE: TurboJet and Turboprop aircraft 250K or greater are authorized.
- NOTE: Landing Rwy 22L/R approaching SAX VORTAC expect radar vectors.



NE-2, 12 SEP 2019 to 10 OCT 2019

NE-2, 12 SEP 2019 to 10 OCT 2019

### ARRIVAL ROUTE DESCRIPTION

- BARNES TRANSITION (BAF.FLOSI3)
- GENESEO TRANSITION (GEE.FLOSI3)
- HANAA TRANSITION (HANAA.FLOSI3)
- HANCOCK TRANSITION (HNK.FLOSI3)
- NELIE TRANSITION (NELIE.FLOSI3)

From FLOSI on track 211° to CRANK, then on track 211° to SHAFF, then on track 211° to SAX VORTAC, then on track 197° to PHLBO, then on track 191° to HOKIR, then on heading 180°. Expect radar vectors.

- NOTE: Landing Rwy 11 approaching PHLBO expect radar vectors.
- NOTE: Landing Rwy 4L/R & Rwy 29 approaching HOKIR WP expect radar vectors.
- NOTE: USE CAUTION: Glider activity between FLOSI and SHAFF.
- NOTE: USE CAUTION: Parachute operations 4 NM radius of 5N5 at or below 14500.



NOTE: Chart not to scale.

# FLOSI THREE ARRIVAL (RNAV)