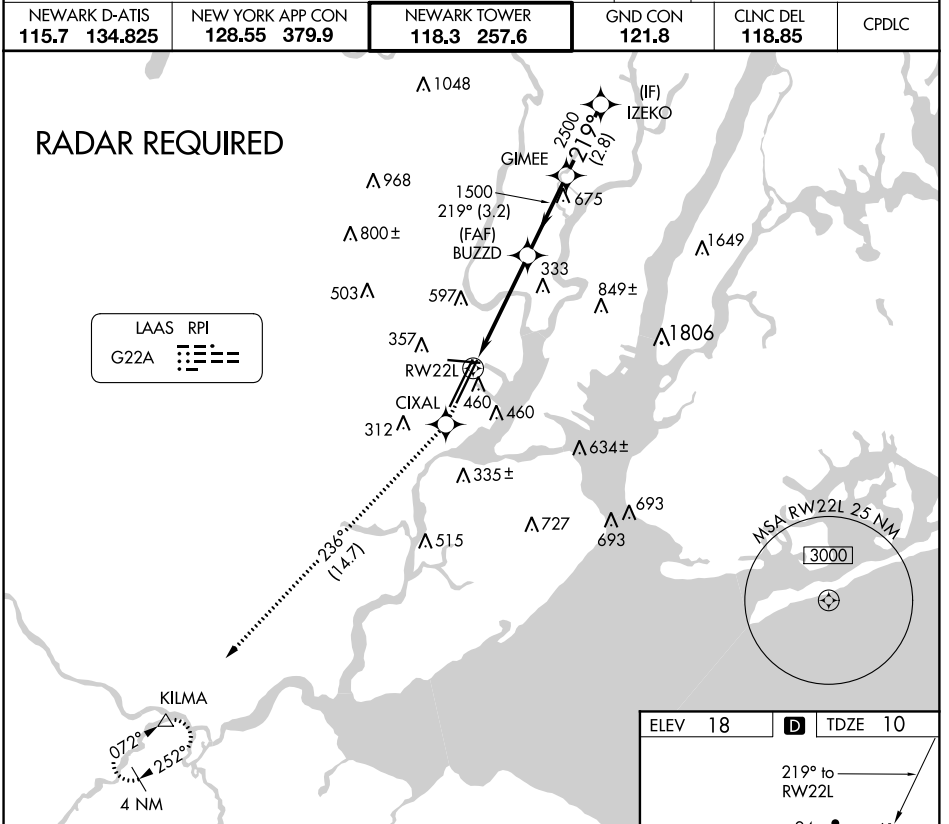


GLS RWY 22L

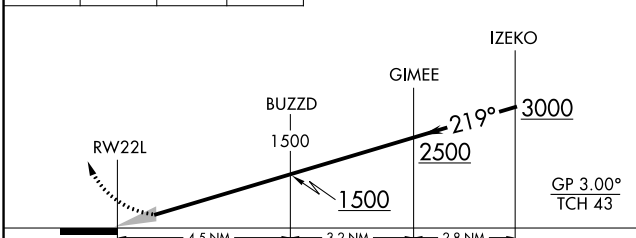
NEWARK LIBERTY INTL (EWR)

GBAS CH 21494 G22A	APP CRS 219°	Rwy Idg 8207 TDZE 10 Apt Elev 18
--	------------------------	---

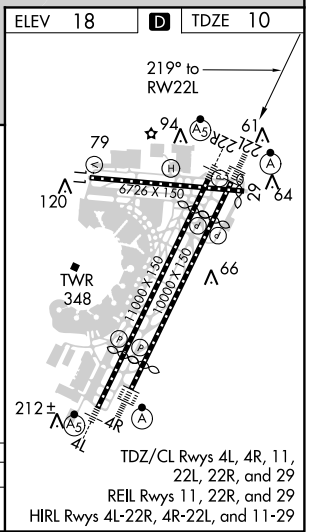
<p>▼ GPS Required. For inoperative MALS increase GLS all Cats visibility to RVR 4000. DME/DME RNP-0.3 NA. Autopilot coupled approach NA below 210.</p> <p>▲ NA</p>	<p>ALSF-2</p>	<p>MISSED APPROACH: Climb to 3000 direct CIXAL and on track 236° to KILMA and hold.</p>			
	<p>NEWARK D-ATIS 115.7 134.825</p>	<p>NEW YORK APP CON 128.55 379.9</p>	<p>NEWARK TOWER 118.3 257.6</p>	<p>GND CON 121.8</p>	<p>CLNC DEL 118.85</p>



3000	CIXAL	KILMA	<p>VGSI and GLS glidepath not coincident (VGSI Angle 3.00/TCH 60).</p>
		tr 236°	



CATEGORY	A	B	C	D
GLS DA	210/18 200 (200-1/2)			



NE-2: 12 SEP 2019 to 10 OCT 2019

NE-2: 12 SEP 2019 to 10 OCT 2019

GLS RWY 22L