

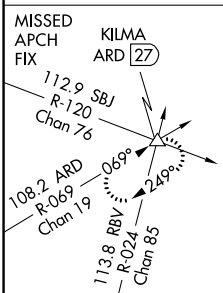
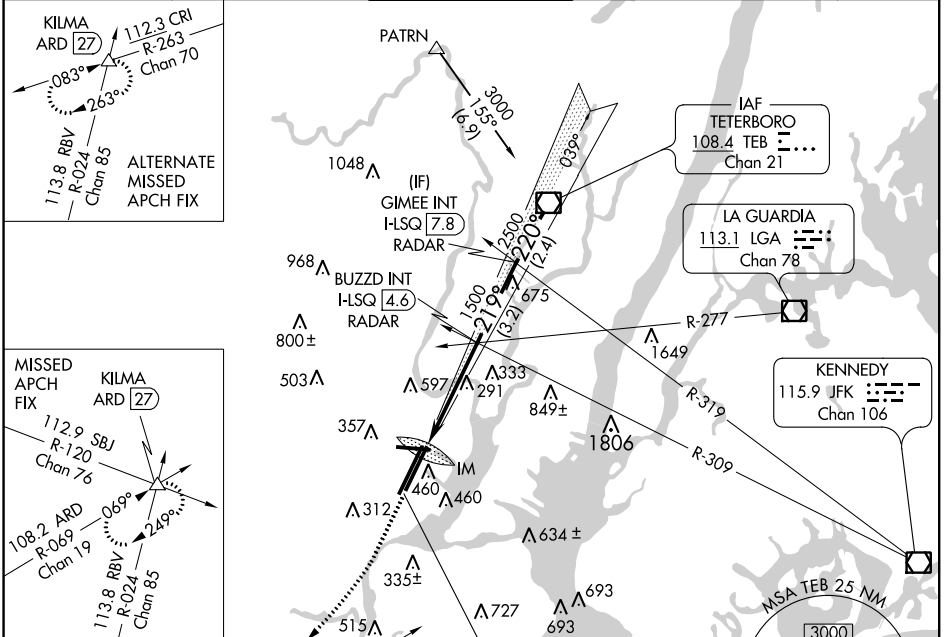
LOC/DME I-LSQ <b>108.7</b> Chan <b>24</b>	APP CRS <b>219°</b>	Rwy Idg TDZE Apt Elev	<b>8207</b> <b>11</b> <b>17</b>
---	------------------------	-----------------------------	---------------------------------------

# ILS RWY 22L (SA CAT I)

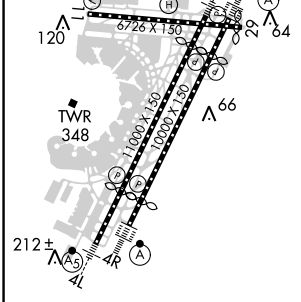
NEWARK LIBERTY INTL (EWR)

<p>Requires specific OPSPEC, MSPEC, or LOA approval and use of HUD to DH.</p>	<p>ALSF-2</p>	<p>MISSED APPROACH: Climb to 500 then climbing right turn to 3000 on heading 225° and ARD VOR/DME R-069 to KILMA INT/ARD 27 DME and hold.</p>
---	---------------	---

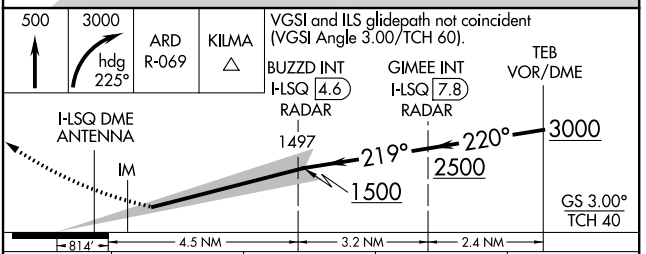
NEWARK D-ATIS <b>115.7 134.825</b>	NEW YORK APP CON <b>128.55 379.9</b>	NEWARK TOWER <b>118.3 257.6</b>	GND CON <b>121.8</b>	CLNC DEL <b>118.85</b>	CPDLC
---------------------------------------	---	------------------------------------	-------------------------	---------------------------	-------



ELEV 17	<b>D</b>	TDZE 11
---------	----------	---------



TDZ/CL Rwy's 4L, 4R, 11, 22L, 22R, and 29  
REIL Rwy's 11, 22R, and 29  
HIRL Rwy's 4L-22R, 4R-22L, and 11-29



CATEGORY	A	B	C	D
S-ILS 22L	RA 152/14 150 DA 161			

**SA CATEGORY I ILS - SPECIAL AIRCREW & AIRCRAFT CERTIFICATION REQUIRED**

NE-2, 12 SEP 2019 to 10 OCT 2019

NE-2, 12 SEP 2019 to 10 OCT 2019