

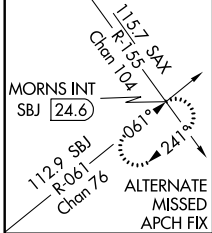
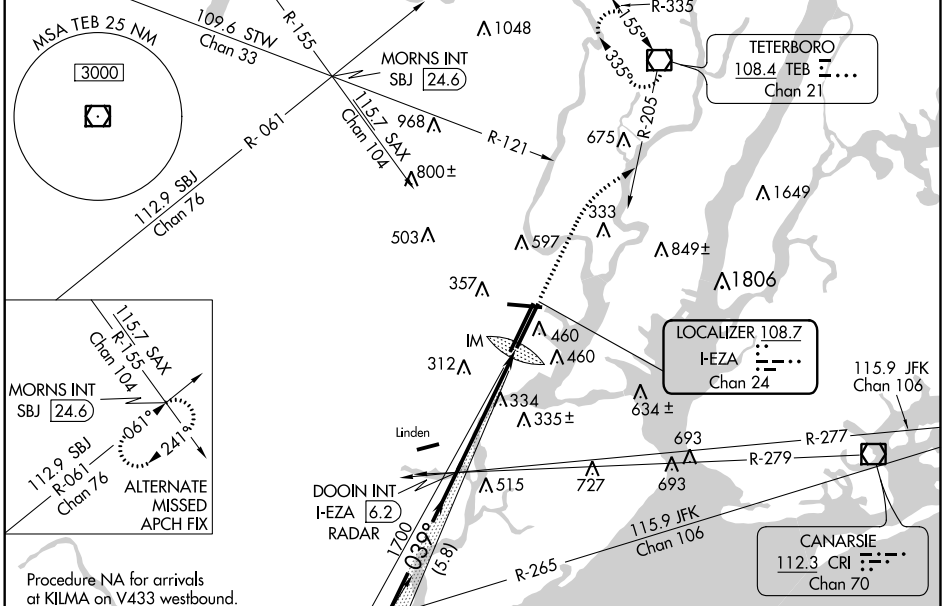
LOC/DME I-EZA 108.7 Chan 24	APP CRS 039°	Rwy Idg TDZE Apt Elev	811 11 17
---	------------------------	-----------------------------	--------------------------------------

ILS RWY 4R (CAT II & III)

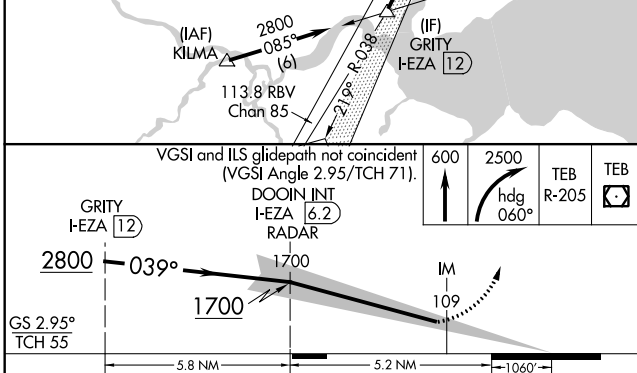
NEWARK LIBERTY INTL (EWR)

	ALSF-2	MISSED APPROACH: Climb to 600 then climbing right turn to 2500 on heading 060° and TEB VOR/DME R-205 to TEB VOR/DME and hold.

NEWARK D-ATIS 115.7 134.825	NEW YORK APP CON 128.55 379.9	NEWARK TOWER 118.3 257.6	GND CON 121.8	CLNC DEL 118.85	CPDLC
---------------------------------------	---	------------------------------------	-------------------------	---------------------------	-------

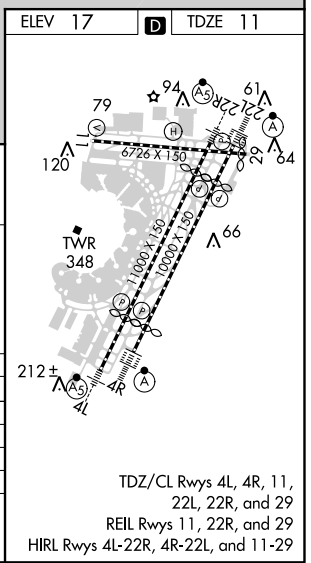


Procedure NA for arrivals at KILMA on V433 westbound.



CATEGORY	A	B	C	D
S-ILS 4R	CAT II RA 100/12 100 DA 111			
S-ILS 4R	CAT IIIa RVR 07			
S-ILS 4R	CAT IIIb RVR 06			
S-ILS 4R	CAT IIIc NA			

CATEGORY II & III ILS - SPECIAL AIRCREW & AIRCRAFT CERTIFICATION REQUIRED



TDZ/CL Rwys 4L, 4R, 11, 22L, 22R, and 29
 REIL Rwys 11, 22R, and 29
 HIRL Rwys 4L-22R, 4R-22L, and 11-29

NE-2, 12 SEP 2019 to 10 OCT 2019

NE-2, 12 SEP 2019 to 10 OCT 2019