

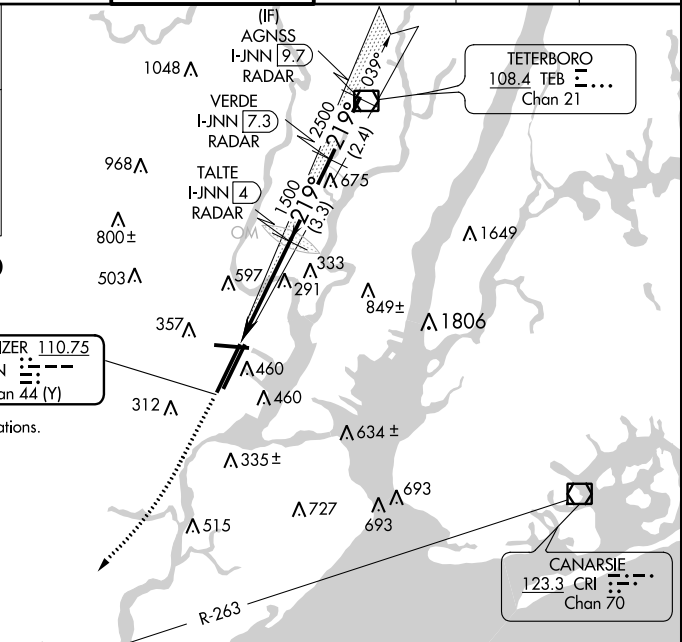
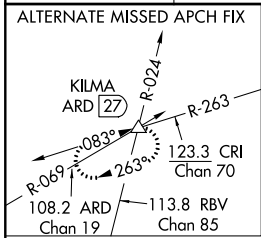
LOC/DME I-JNN 110.75 Chan 44 (Y)	APP CRS 219°	Rwy Idg 22R 22L TDZE 10 11 Apt Elev 17 17
---	------------------------	--

ILS or LOC RWY 22R

NEWARK LIBERTY INTL (EWR)

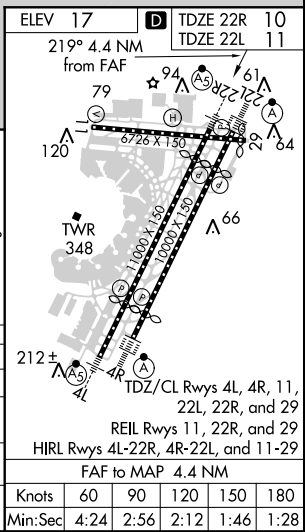
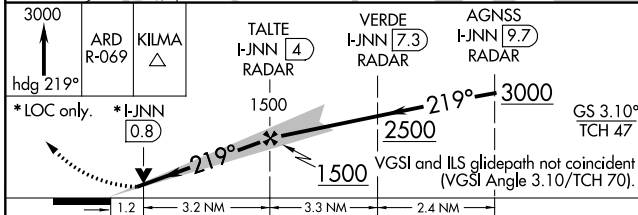
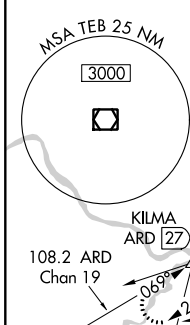
<p>▼ DME or radar required. Night landing: RWY 29 NA. For inoperative ALSF-2, increase Sidestep 22L Cat C visibility to 1½ mile. Inoperative table does not apply to sidestep 22L Cats A and B.</p>	<p>22R MALSRL </p>	<p>22L ALSF-2 </p>	<p>MISSED APPROACH: Climb to 3000 on heading 219° and on ARD VOR/DME R-069 to KILMA INT/ARD 27 DME and hold.</p>
--	------------------------	------------------------	--

NEWARK D-ATIS 115.7 134.825	NEW YORK APP CON 128.55 379.9	NEWARK TOWER 118.3 257.6	GND CON 121.8	CLNC DEL 118.85	CPDLC
---------------------------------------	---	------------------------------------	-------------------------	---------------------------	-------



RADAR REQUIRED

Disregard all marker beacon indications.



CATEGORY	A	B	C	D
S-ILS 22R	210/18		200 (200-½)	
S-LOC 22R	460/24	450 (500-½)	460/45 450 (500-¾)	
SIDESTEP RWY 22L	560/50 549 (600-1)			560-1½ 549 (600-1½)
CIRCLING	760-1 743 (800-1)	820-1 803 (900-1)	900-2¾ 883 (900-2¾)	900-3 883 (900-3)