

ILS or LOC RWY 4R

NEWARK LIBERTY INTL (EWR)

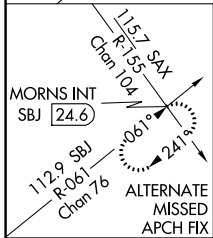
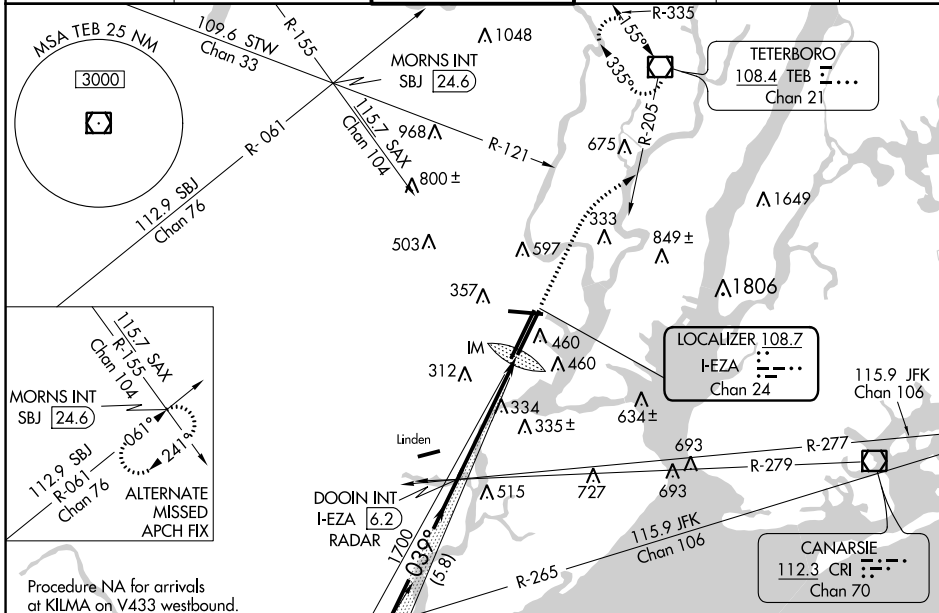
LOC/DME I-EZA	APP CRS	Rwy Idg	4R 8810	4L 8460
108.7	039°	TDZE	11	10
Chan 24		Apt Elev	17	17

⚠ Inoperative table does not apply to Sidestep 4L Cats A and B. For inoperative MALSR, increase Sidestep 4L Cat C visibility to 1 1/4 mile. Circling Rwy 29 NA at night.

4R ALSF-2	4L MALSR

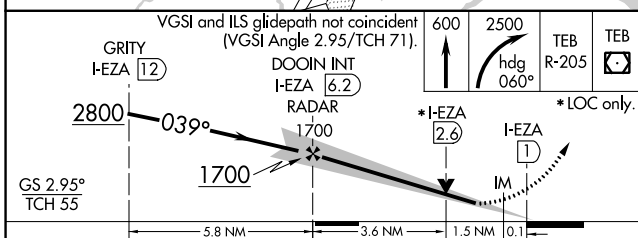
MISSED APPROACH: Climb to 600 then climbing right turn to 2500 on heading 060° and TEB VOR/DME R-205 to TEB VOR/DME and hold.

NEWARK D-ATIS	NEW YORK APP CON	NEWARK TOWER	GND CON	CLNC DEL	CPDLC
115.7 134.825	128.55 379.9	118.3 257.6	121.8	118.85	

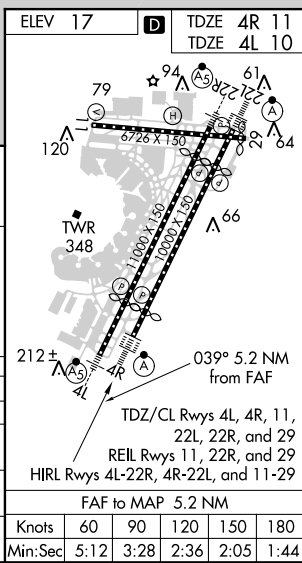


Procedure NA for arrivals at KILMA on V433 westbound.

ELEV 17	D	TDZE 4R 11	TDZE 4L 10
---------	----------	------------	------------



CATEGORY	A	B	C	D
S-ILS 4R	211/18 200 (200-1/2)			
S-LOC 4R	600/24	589 (600-1/2)	600/60	589 (600-1 1/4)
SIDESTEP RWY 4L	620/50	610 (700-1)	620-1 3/8 610 (700-1 3/8)	620-1 1/2 610 (700-1 1/2)
C CIRCLING	760-1 743 (800-1)	820-1 803 (900-1)	900-2 3/4 883 (900-2 3/4)	900-3 883 (900-3)



NE-2, 12 SEP 2019 to 10 OCT 2019

NE-2, 12 SEP 2019 to 10 OCT 2019