

WAAS CH 77524 W22B	APP CRS 219°	Rwy Idg TDZE Apt Elev	9560 10 17
--	------------------------	-----------------------------	---------------------------------------

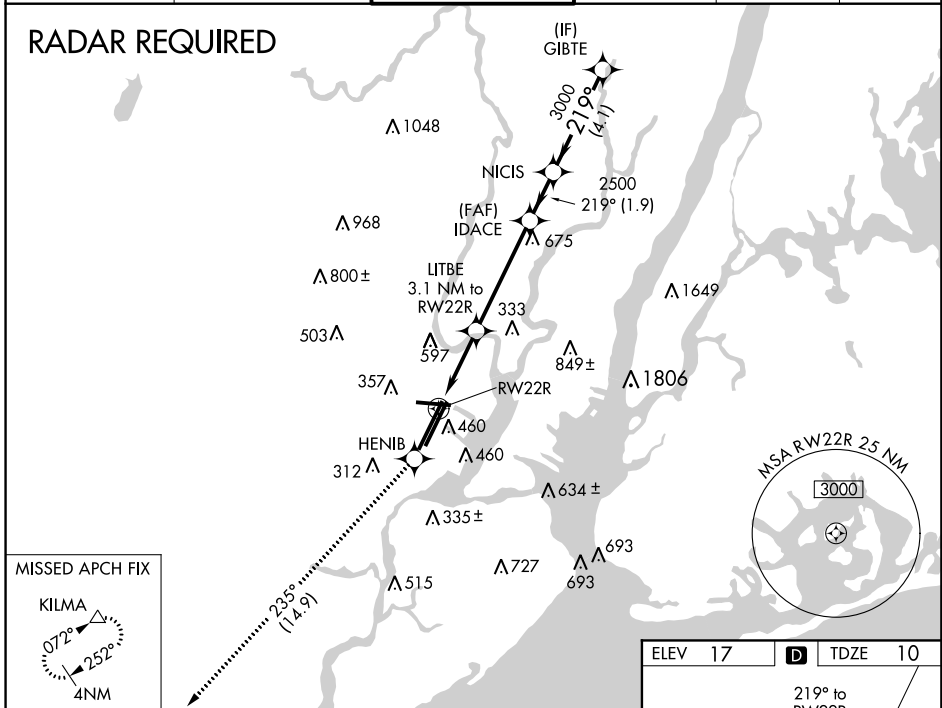
RNAV (GPS) RWY 22R

NEWARK LIBERTY INTL (EWR)

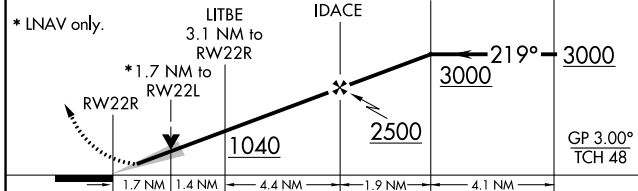
<p>▼ DME/DME RNP-0.3 NA. For inoperative MALSR, increase LPV visibility to RVR 6000 all Cats.</p> <p>▲ Circling Rwy 29 NA at night.</p>	<p>MALSR</p>	<p>MISSED APPROACH: Climb to 3000 direct HENIB and on track 235° to KILMA and hold.</p>
---	--------------	---

NEWARK D-ATIS 115.7 134.825	NEW YORK APP CON 128.55 379.9	NEWARK TOWER 118.3 257.6	GND CON 121.8	CLNC DEL 118.85	CPDLC
---------------------------------------	---	------------------------------------	-------------------------	---------------------------	-------

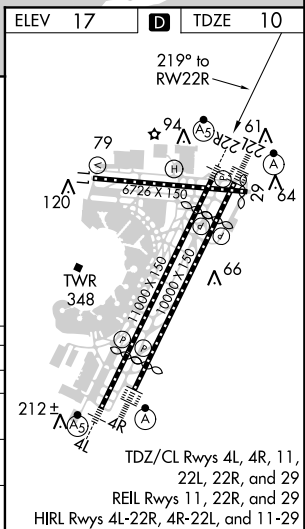
RADAR REQUIRED



3000	HENIB	tr 235°	KILMA	△	VGSI and RNAV glidepath not coincident (VGSI Angle 3.10/TCH 70).
------	-------	---------	-------	---	--



CATEGORY	A	B	C	D
LPV DA		361/40	351 (400-¾)	
LNAV/VNAV DA		NA		
LNAV MDA	620/24	610 (700-½)	620/60 610 (700-¼)	620-1½ 610 (700-½)
C CIRCLING	760-1¼ 743 (800-¼)	820-1¼ 803 (800-¼)	900-2¾ 883 (900-2¾)	900-3 883 (900-3)



RNAV (GPS) RWY 22R

NE-2: 12 SEP 2019 to 10 OCT 2019

NE-2: 12 SEP 2019 to 10 OCT 2019