

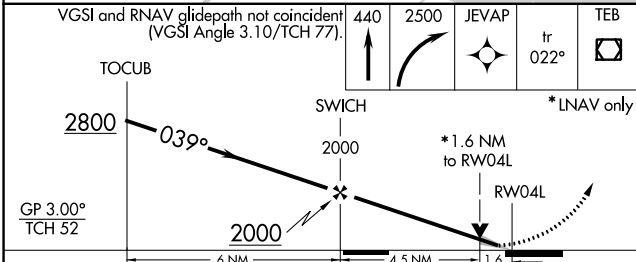
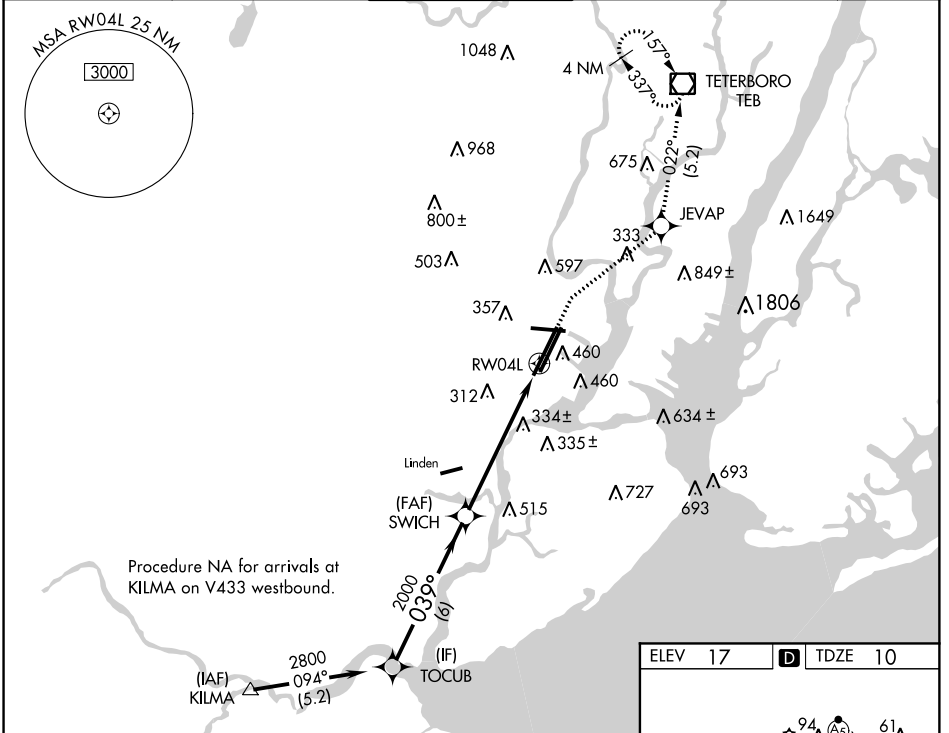
RNAV (GPS) RWY 4L

NEWARK LIBERTY INTL (EWR)

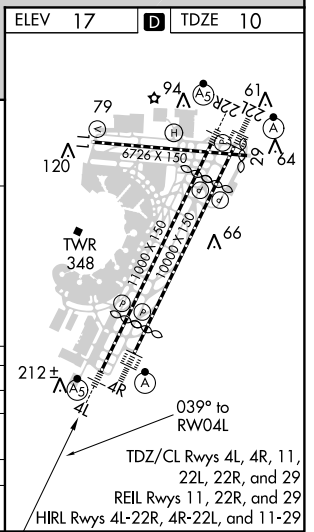
WAAS CH 56224 W04A	APP CRS 039°	Rwy Idg 8460 TDZE 10 Apt Elev 17
--	------------------------	---

RNP APCH.	MALSR	MISSED APPROACH: Climb to 440 then climbing right turn to 2500 direct JEVAP and on track 022° to TEB VOR/DME and hold.
<p>▼ For uncompensated Baro-VNAV systems, LNAV/VNAV NA below -13°C (9°F) or above 54°C (130°F). For inop ALS, increase LPV all Cats visibility to RVR 5500. Circling Rwy 29 NA at night.</p>		

NEWARK D-ATIS 115.7 134.825	NEW YORK APP CON 128.55 379.9	NEWARK TOWER 118.3 257.6	GND CON 121.8	CLNC DEL 118.85	CPDLC
---------------------------------------	---	------------------------------------	-------------------------	---------------------------	-------



CATEGORY	A	B	C	D
LPV DA		379/35	369 (400- $\frac{3}{8}$)	
LNAV/ VNAV DA		470/50	460 (500-1)	
LNAV MDA	600/24	590 (600- $\frac{1}{2}$)	600-1 $\frac{1}{4}$	590 (600-1 $\frac{1}{4}$)
CIRCLING	760-1	820-1	900-2 $\frac{3}{4}$	900-3
	743 (800-1)	803 (900-1)	883 (900-2 $\frac{3}{4}$)	883 (900-3)



NE-2, 12 SEP 2019 to 10 OCT 2019

NE-2, 12 SEP 2019 to 10 OCT 2019