

APP CRS	Rwy Idg	6502
288°	TDZE	10
	Apt Elev	18

RNAV (RNP) Y RWY 29

NEWARK LIBERTY INTL (EWR)

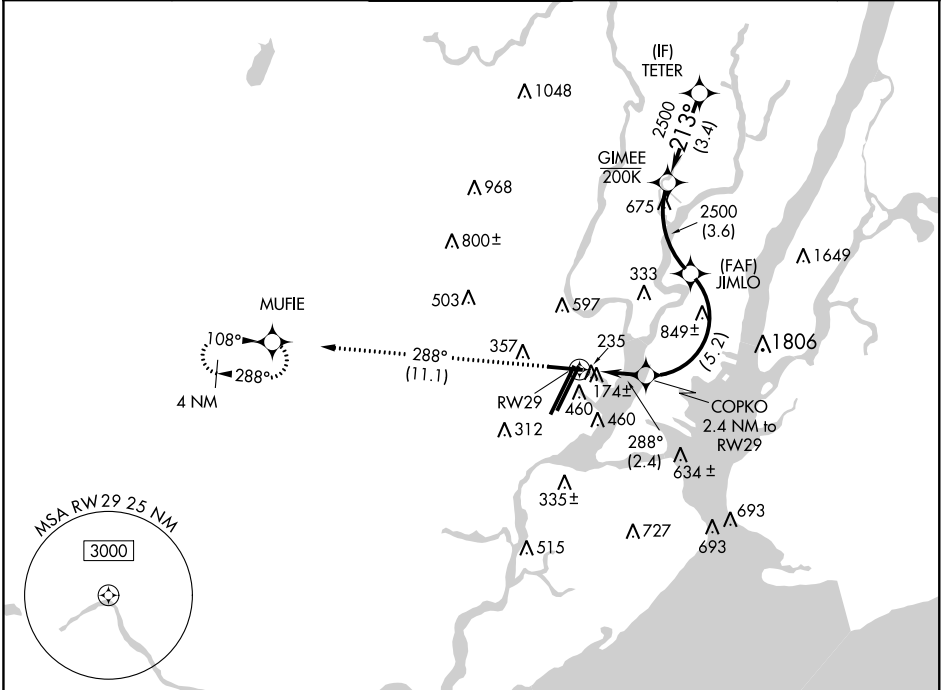
RNP AR APCH. RF required.

V For uncompensated Baro-VNAV systems, procedure NA below -12°C (11°F) or above 54°C (130°F).

NA **Missed approach requires a minimum climb of 417 feet per NM to 800.

MISSED APPROACH: Climb to 2000 on track 288° to MUFIE and hold.

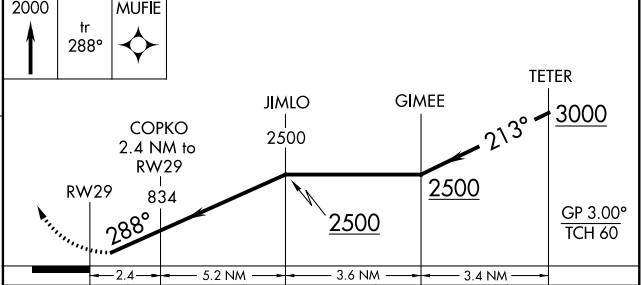
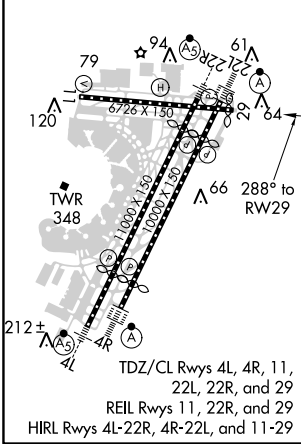
NEWARK D-ATIS	NEW YORK APP CON	NEWARK TOWER	GND CON	CLNC DEL	CPDLC
115.7 134.825	128.55 379.9	118.3 257.6	121.8	118.85	



NE-2, 12 SEP 2019 to 10 OCT 2019

NE-2, 12 SEP 2019 to 10 OCT 2019

ELEV 18	D	TDZE 10
---------	----------	---------



CATEGORY	A	B	C	D
RNP 0.16 DA		461-1½	451 (500-1½)	
RNP 0.30 DA		** 530-1¼	520 (600-1¼)	
RNP 0.30 DA		573-1⅞	563 (600-1⅞)	

AUTHORIZATION REQUIRED