


# RNAV (RNP) Z RWY 4R

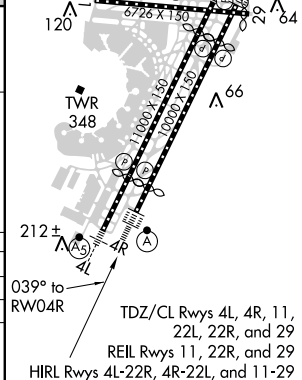
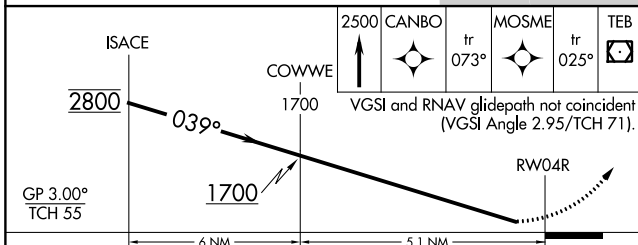
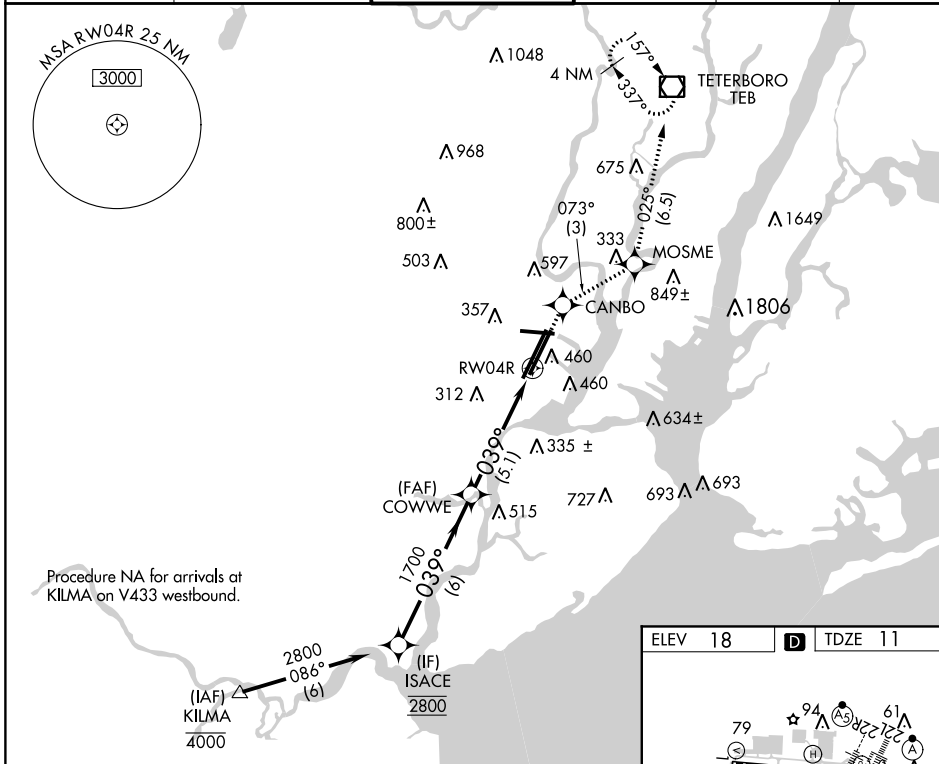
NEWARK LIBERTY INTL (EWR)

APP CRS	Rwy Idg	<b>8810</b>
<b>039°</b>	TDZE	<b>11</b>
	Apt Elev	<b>18</b>

**▼** For uncompensated Baro-VNAV systems, procedure NA below -3°C (27°F) or above 54°C (130°F). GPS required. For inop ALSF-2, increase RNP 0.15 visibility to RVR 6000 all Cats and RNP 0.30 visibility to 1¾ all Cats.  
\*Missed approach requires minimum climb of 317 feet per NM to 700.

**ALSF-2**  
  
**MISSED APPROACH:** Climb to 2500 direct CANBO and on track 073° to MOSME and on track 025° to TEB VOR/DME and hold. When authorized by ATC, climb-in-hold to 3000.

NEWARK D-ATIS	NEW YORK APP CON	NEWARK TOWER	GND CON	CLNC DEL	CPDLC
<b>115.7 134.825</b>	<b>128.55 379.9</b>	<b>118.3 257.6</b>	<b>121.8</b>	<b>118.85</b>	



CATEGORY	A	B	C	D
*RNP 0.15 DA		380/40	369 (400-¾)	
RNP 0.30 DA		490/60	479 (500-1¼)	

**AUTHORIZATION REQUIRED**

# RNAV (RNP) Z RWY 4R

NE-2, 12 SEP 2019 to 10 OCT 2019

NE-2, 12 SEP 2019 to 10 OCT 2019