

RNAV (GPS) Y RWY 4R

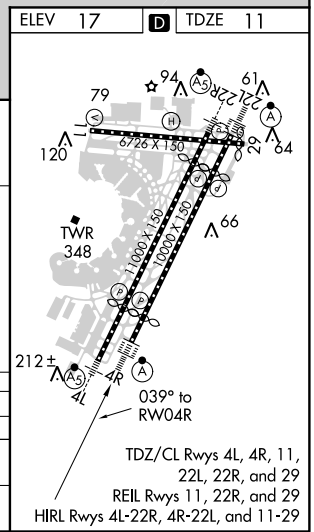
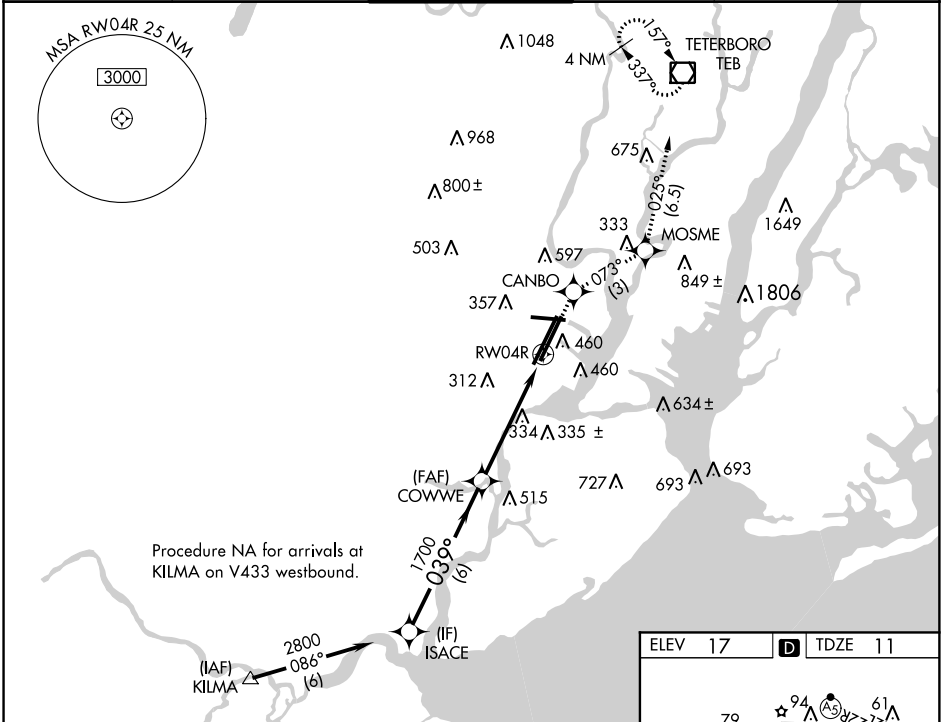
NEWARK LIBERTY INTL (EWR)

WAAS CH 60924 W04B	APP CRS 039°	Rwy Idg 8810 TDZE 11 Apt Elev 17
--	------------------------	---

▼ DME/DME RNP-0.3 NA. For inop ALSF-2, increase LPV visibility to 1¼ mile all Cats, increase LNAV Cats A/B visibility to 1 mile, and Cat C to 1¾ mile. Rwy 4R helicopter visibility reduction below ¾ SM NA. Circling Rwy 29 NA at night.

ALSF-2
▲ MISSED APPROACH: Climb to 2500 direct CANBO and on track 073° to MOSME and on track 025° to TEB VOR/DME and hold.

NEWARK D-ATIS 115.7 134.825	NEW YORK APP CON 128.55 379.9	NEWARK TOWER 118.3 257.6	GND CON 121.8	CLNC DEL 118.85	CPDLC
---------------------------------------	---	------------------------------------	-------------------------	---------------------------	-------



* LNAV only.	2500	CANBO	tr 073°	MOSME	tr 025°	TEB
ISACE	↑	✦	✦	✦	✦	◻
VGSi and RNAV glidepath not coincident (VGSi Angle 2.95/TCH 71).						
2800	039°	COWWE 1700	RW04R	*1.6 NM to RW04R		
GP 3.00° TCH 55	6 NM	3.5 NM	1.6			
CATEGORY	A	B	C	D		
LPV DA	357/40		346 (400-¾)			
LNAV MDA	660/40 649 (700-¾)		660/60 649 (700-1¼)		660-1½ 649 (700-1½)	
C CIRCLING	760-1 743 (800-1)		820-1 803 (900-1)		900-2¾ 883 (900-2¾)	
					900-3 883 (900-3)	

NE-2: 12 SEP 2019 to 10 OCT 2019

NE-2: 12 SEP 2019 to 10 OCT 2019