

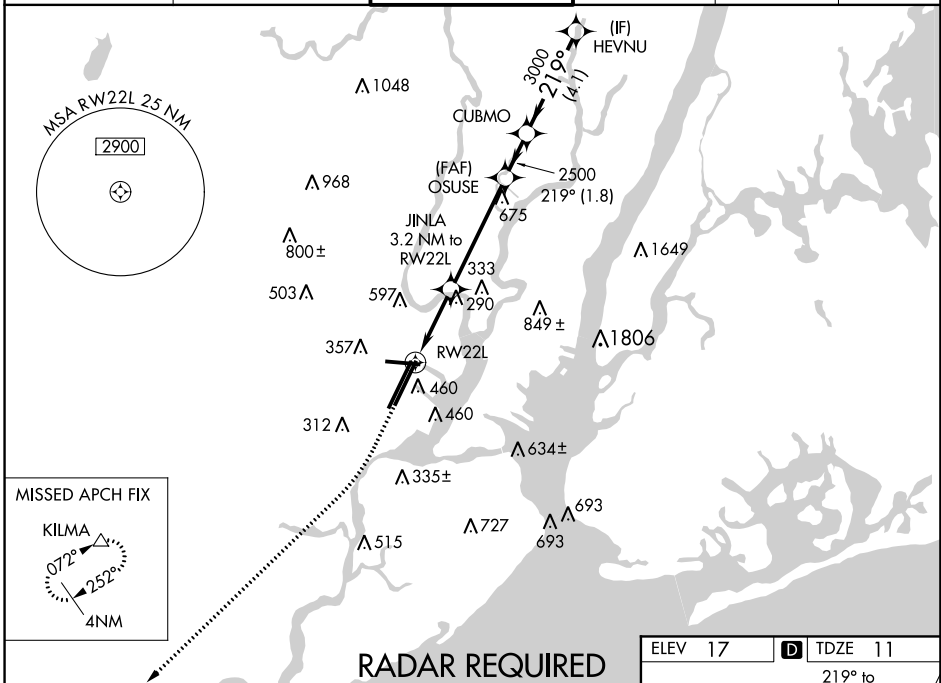
WAAS CH 70324 W22A	APP CRS 219°	Rwy Idg 8207 TDZE 11 Apt Elev 17
--	------------------------	---

RNAV (GPS) Z RWY 22L

NEWARK LIBERTY INTL (EWR)

RNP APCH.	ALSF-2 	MISSED APPROACH: Climb to 600 then climbing right turn to 3000 direct to KILMA and hold.
<p> For uncompensated Baro-VNAV systems, LNAV/VNAV NA below -13°C (9°F) or above 54°C (130°F). Circling Rwy 29 NA at night. For inoperative ALSF-2, increase LNAV/VNAV all Cats visibility to 1 3/8 miles.</p>		

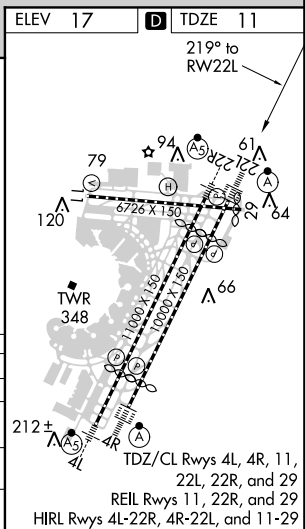
NEWARK D-ATIS 115.7 134.825	NEW YORK APP CON 128.55 379.9	NEWARK TOWER 118.3 257.6	GND CON 121.8	CLNC DEL 118.85	CPDLC
---------------------------------------	---	------------------------------------	-------------------------	---------------------------	-------



NE-2: 12 SEP 2019 to 10 OCT 2019

NE-2: 12 SEP 2019 to 10 OCT 2019

ELEV 17	TDZE 11			
600	3000	KILMA	VGSI and RNAV glidepath not coincident (VGSI Angle 3.00/TCH 60).	
*LNAV only.	JINLA 3.2 NM to RWY 22L	OSUSE 2500	CUBMO HEVNU	
	219°	219°	3000	
CATEGORY	A	B	C	D
LPV DA		211/18	200 (200-1/2)	
LNAV/VNAV DA		462/50	451 (500-1)	
LNAV MDA	560/24	549 (600-1/2)	560/60	549 (600-1 1/4)
CIRCLING	760-1 743 (800-1)	820-1 803 (900-1)	900-2 3/4 883 (900-2 3/4)	900-3 883 (900-3)



RNAV (GPS) Z RWY 22L