

JIIIMS THREE ARRIVAL (RNAV)

PHILADELPHIA, PENNSYLVANIA

NE-4, 12 SEP 2019 to 10 OCT 2019

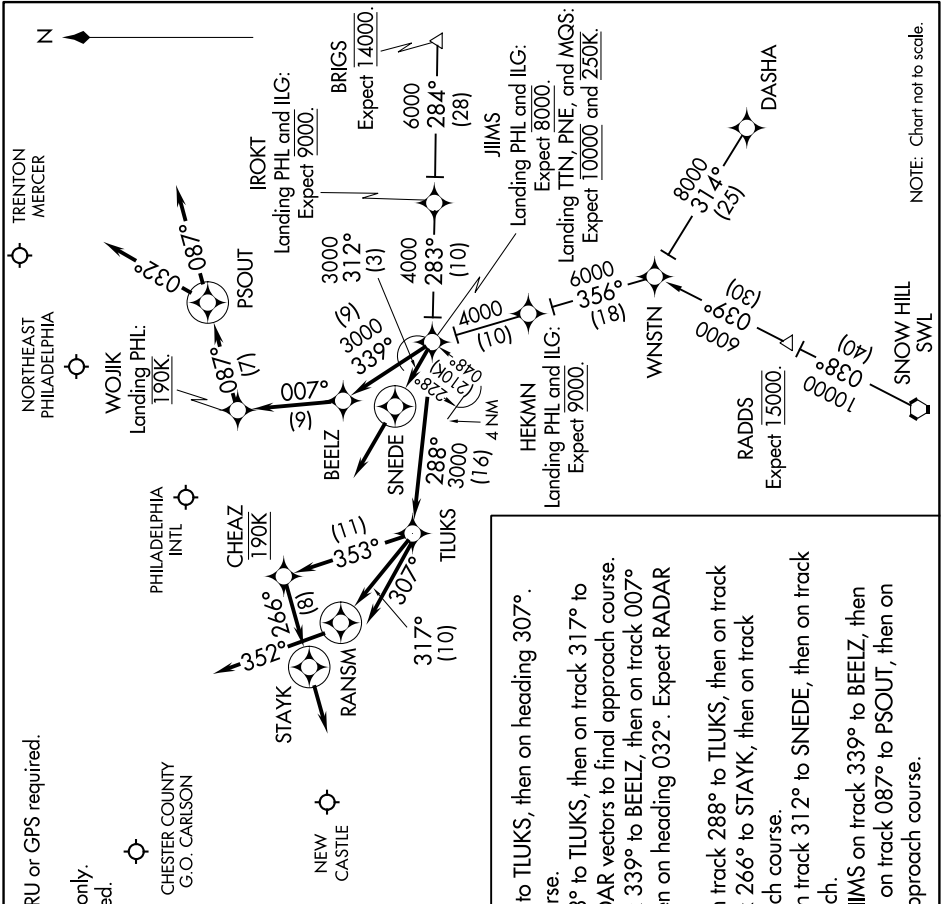
NOTE: DME/DME/IRU or GPS required.
 NOTE: RNAV 1.
 NOTE: For turbojets only.
 NOTE: Radar required.

PHILADELPHIA INTL
 D-ATIS ARR 133.4
 NORTHEAST PHILADELPHIA
 ATIS 121.15
 TRENTON MERCER
 ATIS 126.775
 NEW CASTLE ATIS 123.95
 CHESTER COUNTY G.O. CARLSON
 AWOS-3 126.25
 PHILADELPHIA APP CON
 133.875 317.55

ARRIVAL ROUTE DESCRIPTION

BRIGS TRANSITION (BRIGS.JIIMS3):
DASHA TRANSITION (DASHA.JIIMS3):
SNOW HILL TRANSITION (SWL.JIIMS3):

Landing ILG: From over JIIIMS on track 288° to TLUKS, then on heading 307°. Expect RADAR vectors to final approach course.
 Landing MGS: From over JIIIMS on track 288° to TLUKS, then on track 317° to RANSW, then on heading 352°. Expect RADAR vectors to final approach course.
 Landing PNE, TTN: From over JIIIMS on track 339° to BEELZ, then on track 007° to WOJJK, then on track 087° to PSOUT, then on heading 032°. Expect RADAR vectors to final approach course.
 Landing PHL Rwy 9L, 9R: From over JIIIMS on track 288° to TLUKS, then on track 353° to cross CHEAZ at 190K, then on track 266° to STAYK, then on track 266°. Expect RADAR vectors to final approach course.
 Landing PHL Rwy 17, 35: From over JIIIMS on track 312° to SNEDE, then on track 312°. Expect RADAR vectors to final approach.
 Landing PHL Rwy 26, 27L, 27R: From over JIIIMS on track 339° to BEELZ, then on track 007° to cross WOJJK at 190K, then on track 087° to PSOUT, then on track 087°. Expect RADAR vectors to final approach course.



JIIIMS THREE ARRIVAL (RNAV)

PHILADELPHIA, PENNSYLVANIA

NE-4, 12 SEP 2019 to 10 OCT 2019