

WAAS CH 65625 W28A	APP CRS 279°	Rwy ldg TDZE 1251 Apt Elev 1252	6501
--	------------------------	---	-------------

RNAV (GPS) RWY 28

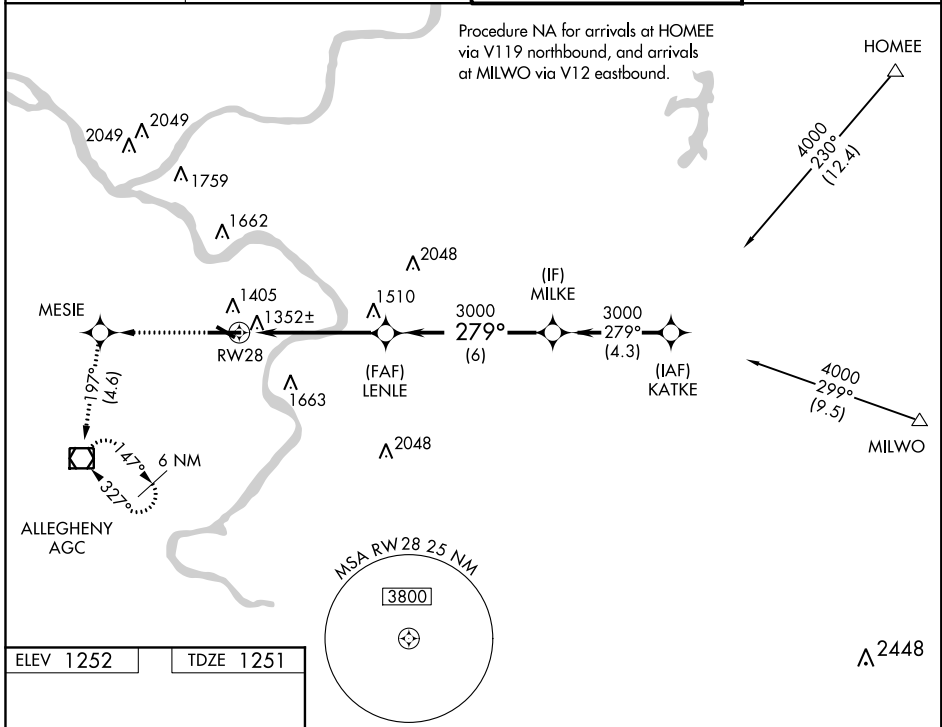
ALLEGHENY COUNTY (AGC)

Baro-VNAV NA below -17°C (2°F).
DME/DME RNP-0.3 NA.
For inoperative MALSRS, increase LPV visibility to RVR 5000 all Cats.

MALSRS

MISSED APPROACH: Climb to 3000 direct MESIE and via 197° track to AGC VOR/DME and hold.

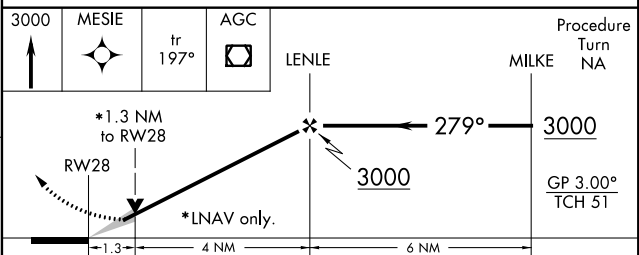
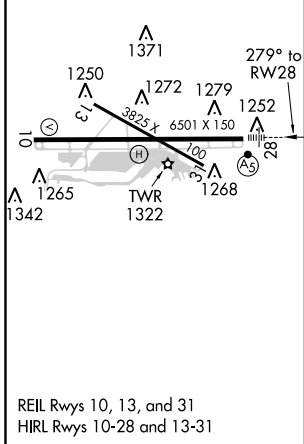
ATIS 120.55	PITTSBURGH APP CON 119.35 285.575	ALLEGHENY TOWER 121.1 239.0	GND CON 121.7
-----------------------	---	---------------------------------------	-------------------------



NE-4, 12 SEP 2019 to 10 OCT 2019

NE-4, 12 SEP 2019 to 10 OCT 2019

ELEV 1252	TDZE 1251
------------------	------------------



CATEGORY	A	B	C	D
LPV DA	1563/24 312 (400-½)			
LNAV/VNAV DA	1625/40 374 (400-¾)			
LNAV MDA	1700/24 449 (500-½)	1700/40 449 (500-¾)	1700/50 449 (500-1)	1700/50 449 (500-1)
CIRCLING	1740-1¼ 488 (500-1¼)	1740-1½ 488 (500-1½)	1740-1½ 488 (500-1½)	1820-2 568 (600-2)