

PORTLAND, OREGON

# HI-ILS or LOC/DME RWY 10R

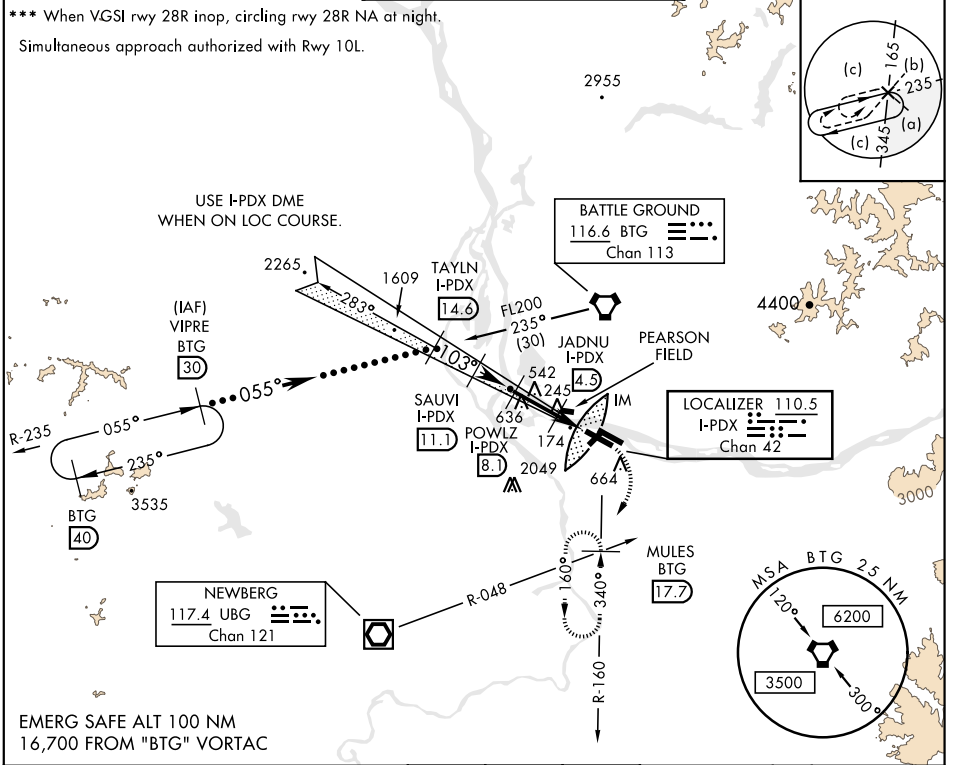
LOC/DME I-PDX <b>110.5</b> Chan <b>42</b>	APCH CRS <b>103°</b>	Rwy ldg <b>11,000</b> THRE <b>23</b> Arpt Elev <b>31</b>	JAL-330 [USAF]	PORTLAND INTL (KPDX)
---	-------------------------	--	----------------	----------------------

▼ \* When ALS inop, increase RVR to 40 and vis to 3/4 mile.  
 \*\* When ALS inop, increase CAT CDE RVR to 60 and vis to 1 1/2 miles.

ALSF-2

MISSED APPROACH: Climb to 1100 then climbing right turn to 5000 on BTG VORTAC R-160 to MULES/BTG 17.7 DME and hold, continue climb-in-hold to 5000.

ATIS <b>128.35 269.9</b>	PORTLAND APP CON <b>118.1 284.6</b> (100°-279°) <b>124.35 299.2</b> (280°-099°)	PORTLAND TOWER <b>118.7 257.8</b> Rwy 10L-28R Rwy 3-21, 10R-28L	GND CON <b>121.9 348.6</b>	CLNC DEL <b>120.125 318.1</b>
-----------------------------	---	--	-------------------------------	----------------------------------



VIPRE BTG 30	TAYLN I-PDX 14.6	SAUVI I-PDX 11.1	POWLZ I-PDX 8.1	JADNU I-PDX 4.9	I-PDX 3.1	I-PDX 2	I-PDX DME
FL200	3800	2900	2000	860+			
1100	5000						MULES BTG 17.7
ELEV 31							THRE 23
103° 6.0 NM from FAF							424 ±
CATEGORY	C	D	E				
S-ILS 10R*	223/18	200	(200-3/4)				
S-LOC/DME 10R**	440/40	417	(500-3/4)				
CIRCLING***	760-2 729 (800-2)	980-3 949 (1000-3)	1140-3 1109 (1200-3)				

PORTLAND, OREGON 45°35'N-122°36'W PORTLAND INTL (KPDX)

# HI-ILS or LOC/DME RWY 10R



NW-1, 12 SEP 2019 to 10 OCT 2019

NW-1, 12 SEP 2019 to 10 OCT 2019

Amtd 7B 18OCT12