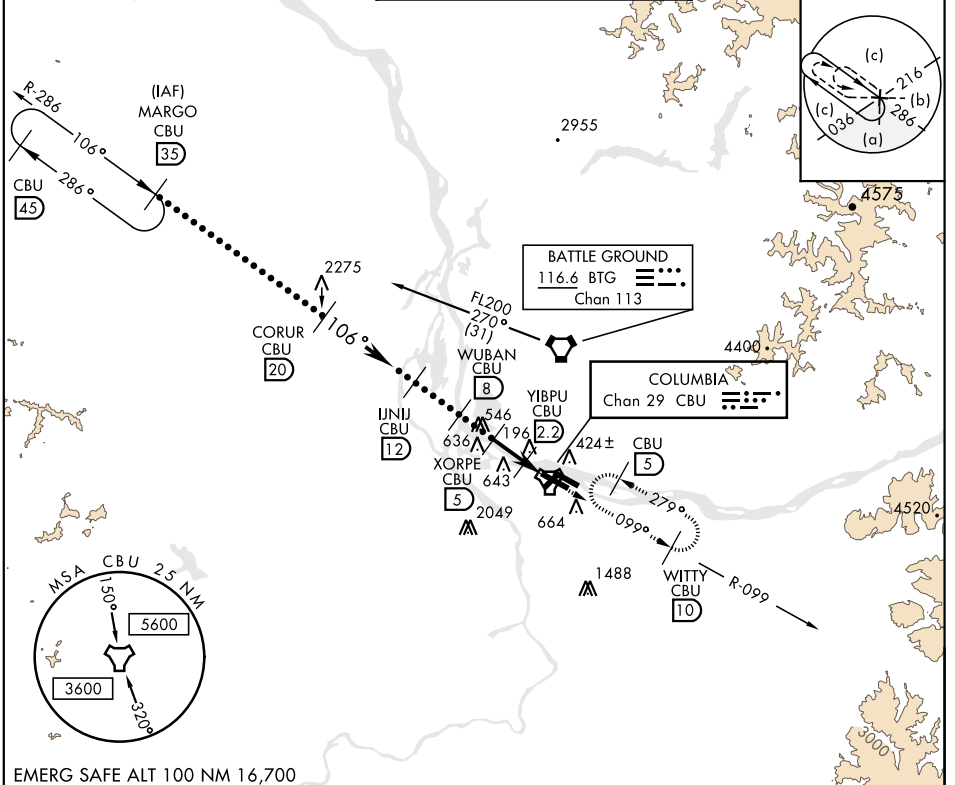


HI-TACAN RWY 10R

TACAN CBU Chan 29	APCH CRS 106°	Rwy ldg 11,000 TDZE 24 Arprt Elev 31	JAL-330 [USAF]	PORTLAND INTL (KPDX)
<p>▼ * When ALS inop, increase CAT C RVR to 50 and vis to 1½ miles, CAT DE vis to 1¾ miles. ** When VGSI rwy 28R inop, circling rwy 28R NA at night.</p>			ALS F-2	MISSED APPROACH: Climb to 4000 via CBU TACAN R-099 to WITTY/CBU 10 DME and hold, continue climb in holding.

ATIS 128.35 269.9	PORTLAND APP CON 118.1 284.6 (100°-279°) 124.35 299.2 (280°-099°)	PORTLAND TOWER 118.7 257.8 Rwy 10L-28R 123.775 251.125 Rwy 3-21, 10R-28L	GND CON 121.9 348.6	CLNC DEL 120.125 318.1
-----------------------------	---	--	-------------------------------	----------------------------------



EMERG SAFE ALT 100 NM 16,700

<p>MARGO R-286 [35]</p> <p>FL200</p> <p>106°</p> <p>CORUR [20]</p> <p>7500</p> <p>INJU [12]</p> <p>3600</p> <p>WUBAN [8]</p> <p>2500</p> <p>XORPE [5]</p> <p>1600</p> <p>YIBPU [2.2]</p> <p>620</p> <p>TACAN</p> <p>JURUL [0.3]</p> <p>4.4 NM</p>	<p>VGSI and descent angles not coincident.</p>		<p>4000</p> <p>CBU R-099</p>	<p>WITTY CBU [10]</p>	<p>ELEV 31</p> <p>TDZE 24</p>	
	<p>101 (A5)</p> <p>100 (A5)</p> <p>9825 x 150</p> <p>96 ±</p> <p>96 ±</p> <p>127 ±</p> <p>TWR 291</p> <p>9225 x 150</p> <p>11,000 x 150</p> <p>8800 x 150</p>	<p>Rwy 10L ldg 8535' Rwy 28R ldg 9290' REIL Rwy 3-21 TDZL/CL Rwy 10R MIRL Rwy 3-21 HIRL Rwy 10L-28R, 28L-10R</p>				
CATEGORY	C	D	E			
S-10R*	460/40 436 (500-¾)	460/50 436 (500-1)				
CIRCLING**	760-2 729 (800-2)	1000-3 969 (1000-3)	1160-3 1129 (1200-3)			

HI-TACAN RWY 10R

NW-1, 12 SEP 2019 to 10 OCT 2019

NW-1, 12 SEP 2019 to 10 OCT 2019