

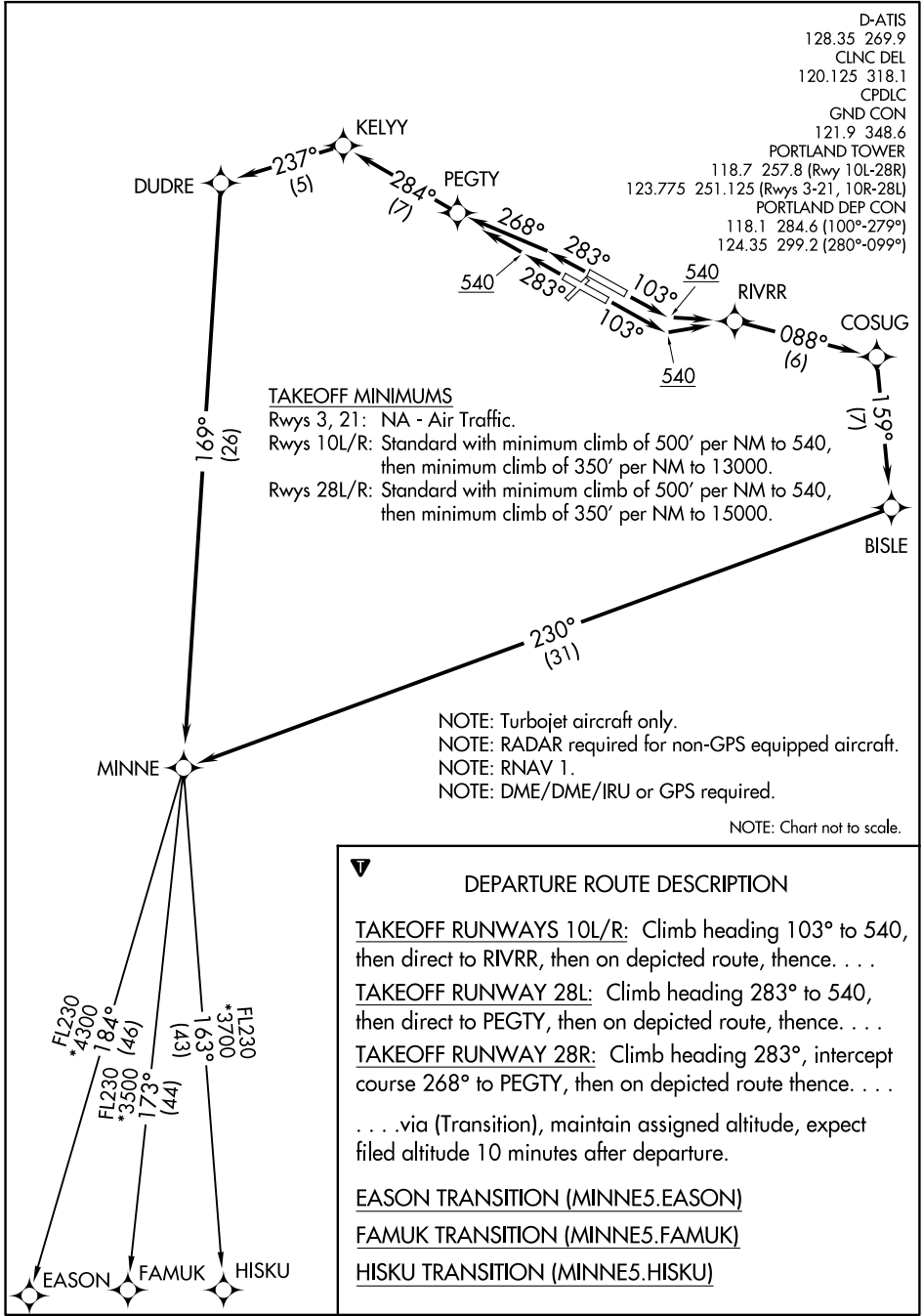
# MINNE FIVE DEPARTURE (RNAV)

AL-330 (FAA)

PORTLAND INTL (PDX)  
PORTLAND, OREGON

NW-1, 12 SEP 2019 to 10 OCT 2019

NW-1, 12 SEP 2019 to 10 OCT 2019



D-ATIS  
128.35 269.9  
CLNC DEL  
120.125 318.1  
CPDLC  
GND CON  
121.9 348.6  
PORTLAND TOWER  
118.7 257.8 (Rwy 10L-28R)  
123.775 251.125 (Rwys 3-21, 10R-28L)  
PORTLAND DEP CON  
118.1 284.6 (100°-279°)  
124.35 299.2 (280°-099°)

**TAKEOFF MINIMUMS**  
Rwys 3, 21: NA - Air Traffic.  
Rwys 10L/R: Standard with minimum climb of 500' per NM to 540, then minimum climb of 350' per NM to 13000.  
Rwys 28L/R: Standard with minimum climb of 500' per NM to 540, then minimum climb of 350' per NM to 15000.

NOTE: Turbojet aircraft only.  
NOTE: RADAR required for non-GPS equipped aircraft.  
NOTE: RNAV 1.  
NOTE: DME/DME/IRU or GPS required.  
NOTE: Chart not to scale.