

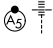
APP CRS	Rwy Idg	8535
103°	TDZE	30
	Apt Elev	31

RNAV (RNP) Z RWY 10L

PORTLAND INTL (PDX)

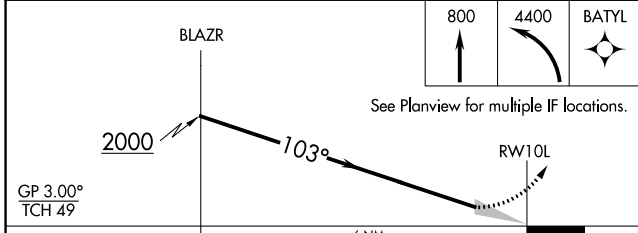
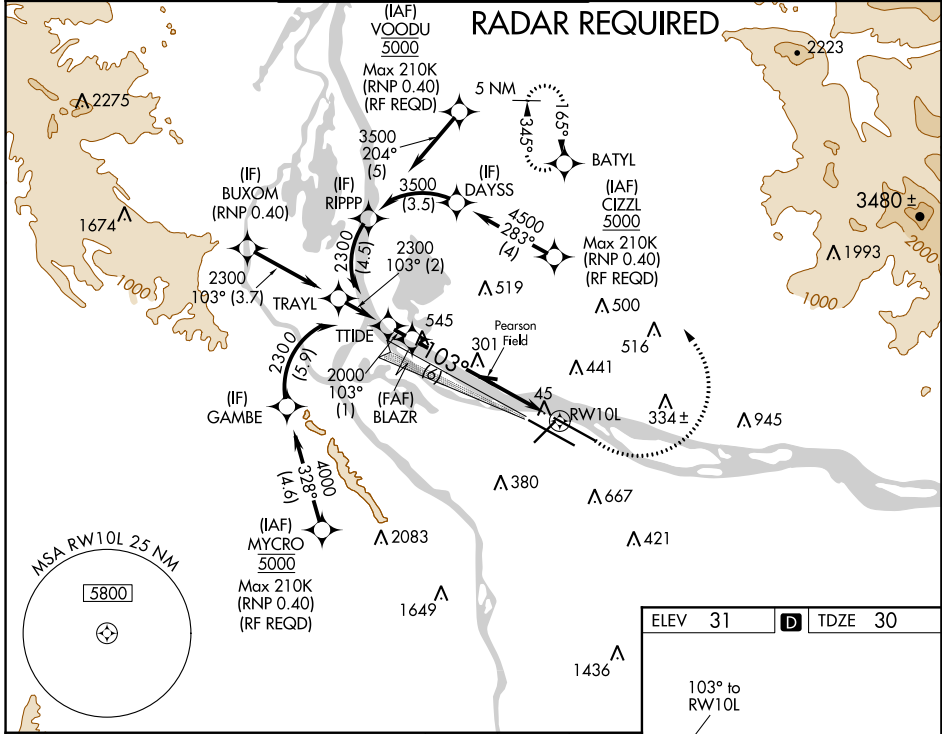
GPS required. For inop MALSR, increase RNP 0.30 all Cats visibility to RVR 5500. For uncompensated Baro-VNAV systems, procedure NA below -6°C (22°F) or above 54°C (130°F). Simultaneous approach authorized with Rwy 10R, except for arrivals at CIZLZ, VOODOU, and MYCRO. Use of FD or AP providing RNAV track guidance required for simultaneous operations.

MALSR

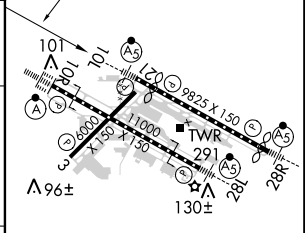


MISSED APPROACH: Climb to 800 then climbing left turn to 4400 direct BATYL and hold, continue climb-in-hold to 4400.

D-ATIS 128.35 269.9	PORTLAND APP CON 124.35 299.2	PORTLAND TOWER Rwy 10L-28R 118.7 257.8 Rwys 3-21, 10R-28L 123.775 251.125	GND CON 121.9 348.6	CLNC DEL 120.125 318.1	CPDLC
---	---	---	-------------------------------	----------------------------------	-------



ELEV 31	D TDZE 30
---------	------------------



CATEGORY	A	B	C	D
RNP 0.30 DA		365/32	335 (400- $\frac{5}{8}$)	
AUTHORIZATION REQUIRED				

REIL Rwys 3 and 21
TDZ/CL Rwy 10R
MIRL Rwy 3-21
HIRL Rwys 10L-28R and 10R-28L

NW-1, 12 SEP 2019 to 10 OCT 2019

NW-1, 12 SEP 2019 to 10 OCT 2019