

RNAV (RNP) Z RWY 10R

PORTLAND INTL (PDX)

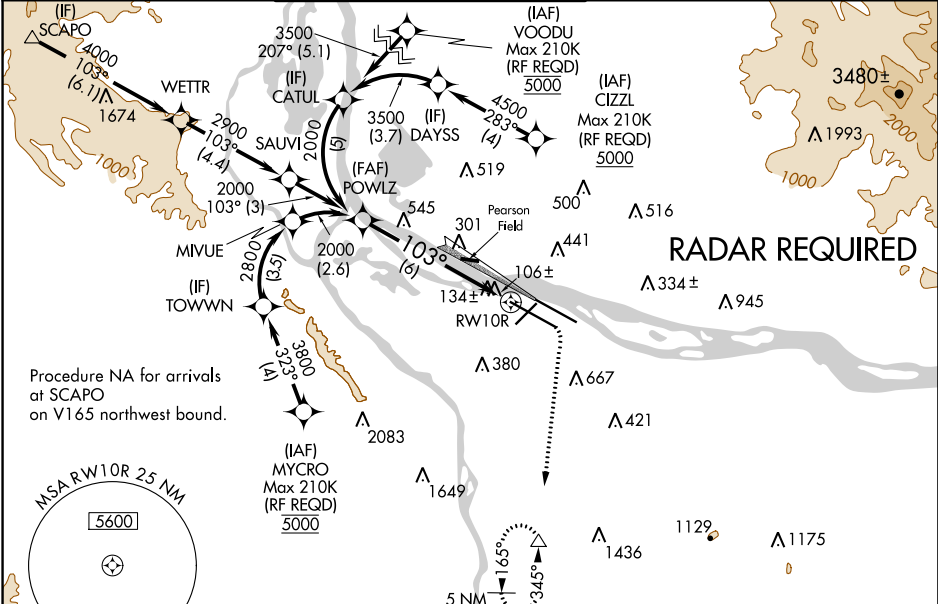
APP CRS	Rwy Idg	11000
103°	TDZE	24
	Apt Elev	31

GPS required. For inoperative ALSF, increase RNP 0.10 all Cats visibility to RVR 5000 and 0.30 all Cats visibility to 1 $\frac{1}{2}$ miles. For uncompensated Baro-VNAV systems, procedure NA below -15°C (5°F) or above 54°C (130°F). Simultaneous approach authorized with Rwy 10L. Use of FD or AP providing RNAV track guidance required during simultaneous operations.

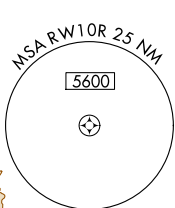


MISSED APPROACH: Climb to 440 then climbing right turn to 5000 direct MULES and hold, continue climb-in-hold to 5000.

D-ATIS	PORTLAND APP CON	PORTLAND TOWER	GND CON	CINC DEL	CPDLC
128.35	124.35 299.2	Rwy 10L-28R 118.7 257.8 123.775 251.125	121.9 348.6	120.125 318.1	



Procedure NA for arrivals at SCAPO on V165 northwest bound.

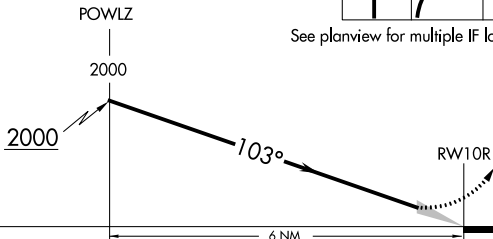


ELEV 31	D	TDZE 24
---------	---	---------

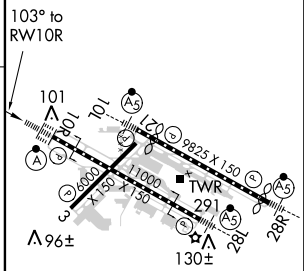
VGSI and RNAV glidepath not coincident (VGSI Angle 3.00/TCH 71).



See planview for multiple IF locations.



GP 3.00°
TCH 53



CATEGORY	A	B	C	D
RNP 0.10 DA		347/32	323 (400- $\frac{3}{4}$)	
RNP 0.30 DA		449/50	425 (500-1)	

AUTHORIZATION REQUIRED

REIL Rwy 3 and 21
TDZ/CL Rwy 10R
MIRL Rwy 3-21
HIRL Rwy 10L-28R and 10R-28L

NW-1, 12 SEP 2019 to 10 OCT 2019

NW-1, 12 SEP 2019 to 10 OCT 2019