

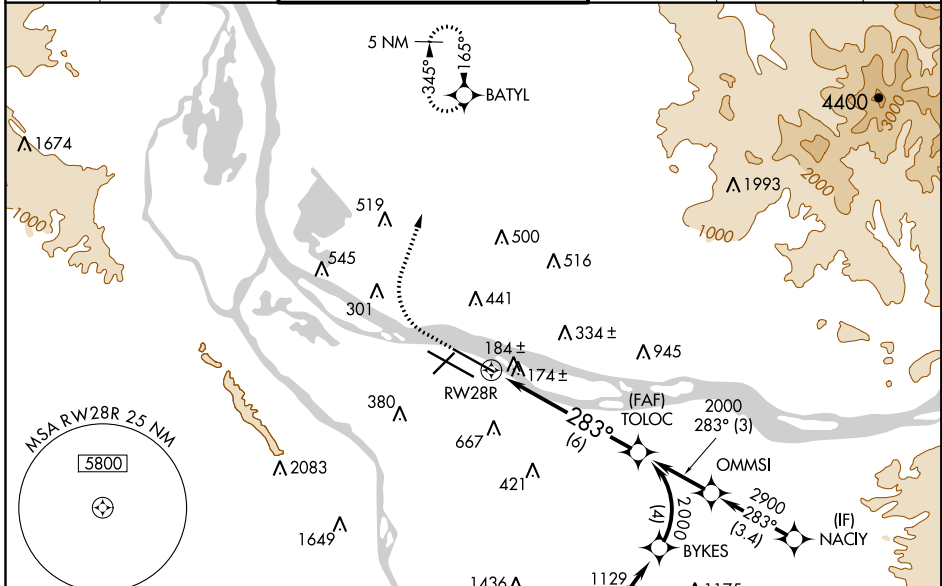
APP CRS	Rwy Idg	9290
283°	TDZE	31
	Apt Elev	31

RNAV (RNP) Z RWY 28R

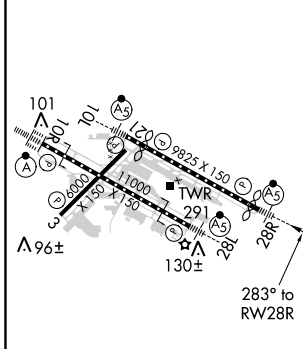
PORTLAND INTL (PDX)

RNP AR APCH.		MALSR	MISSED APPROACH: Climb to 600 then climbing right turn to 4400 direct BATYL and hold, continue climb-in-hold to 4400.
<p>Use of FD or AP providing RNAV track guidance required during simultaneous operations. Simultaneous approach authorized with Rwy 28L RADAR required. For uncompensated Baro-VNAV systems, procedure NA below -6°C or above 54°C. For inop ALS increase RNP 0.20 all Cats visibility to 1 1/4 SM, and increase RNP 0.30 all Cats visibility to 1 1/2 SM.</p>			

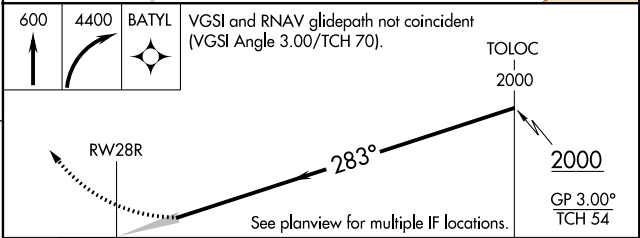
D-ATIS 128.35 269.9	PORTLAND APP CON 124.35 299.2	PORTLAND TOWER Rwy 10L-28R 118.7 257.8	Rwys 3-21, 10R-28L 123.775 251.125	GND CON 121.9 348.6	CLNC DEL 120.125 318.1	CPDLC
---	---	---	--	-------------------------------	----------------------------------	-------



ELEV 31	D	TDZE 31
---------	----------	---------



600 4400 BATYL VGSI and RNAV glidepath not coincident (VGSI Angle 3.00/TCH 70).



CATEGORY	A	B	C	D
RNP 0.20 DA	417/40	386 (400-3/4)	417/50	386 (400-1)
RNP 0.30 DA	471/50		440 (500-1)	

AUTHORIZATION REQUIRED

NW-1, 12 SEP 2019 to 10 OCT 2019

NW-1, 12 SEP 2019 to 10 OCT 2019