

WAAS CH 60905 W28A	APP CRS 283°	Rwy Idg TDZE Apt Elev	9290 31 31
--	------------------------	-----------------------------	---------------------------------------

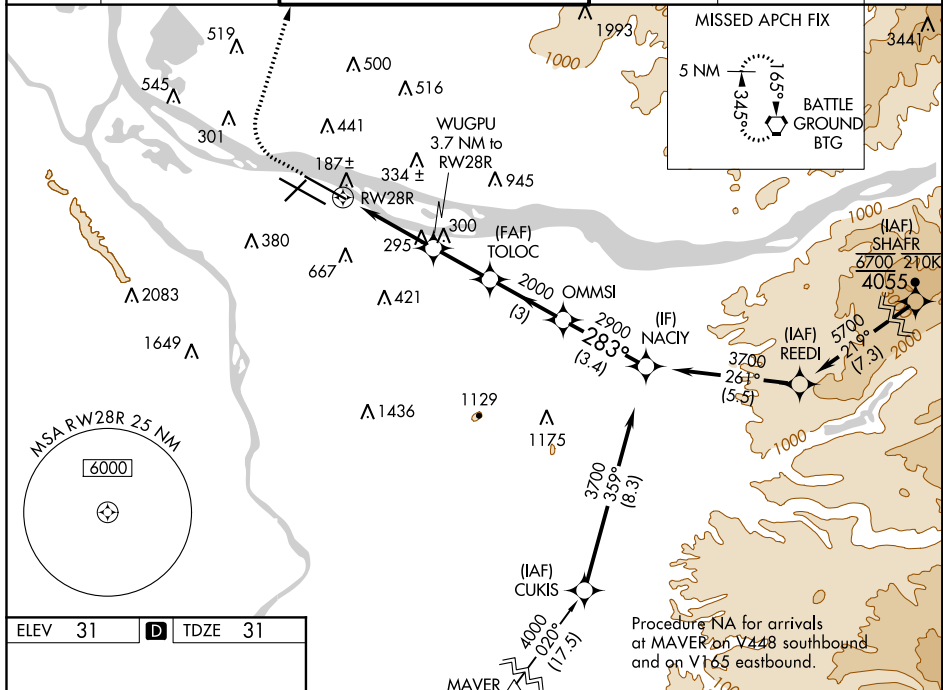
RNAV (GPS) X RWY 28R

PORTLAND INTL (PDX)

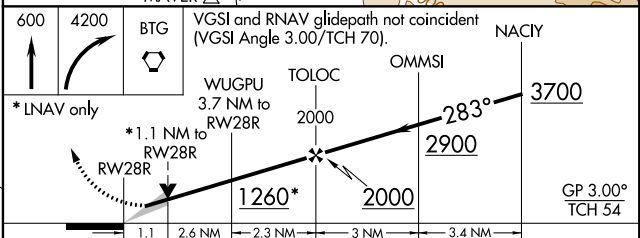
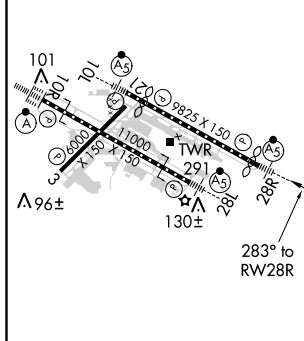
▽ For uncompensated Baro-VNAV systems, LNAV/VNAV NA below -6°C (22°F) or above 54°C (130°F). Simultaneous approach authorized. LNAV procedure NA during simultaneous operations. DME/DME RNP-0.3 NA. Use of FD or AP providing RNAV track guidance required during simultaneous operations. For inop ALS increase LNAV Cat C/D visibility to RVR 6000.

MALSR
MISSED APPROACH: Climb to 600 then climbing right turn to 4200 direct BTG VORTAC and hold, continue climb-in-hold to 4200.

D-ATIS 128.35 269.9	PORTLAND APP CON 124.35 299.2	PORTLAND TOWER Rwy 10L-28R 118.7 257.8 Rwys 3-21, 10R-28L 123.775 251.125	GND CON 121.9 348.6	CLNC DEL 120.125 318.1	CPDLC
---	---	---	-------------------------------	----------------------------------	-------



ELEV 31	D	TDZE 31
---------	----------	---------



CATEGORY	A	B	C	D
LPV DA		281/24	250 (300-½)	
LNAV/VNAV DA		446/45	415 (500-¾)	
LNAV MDA	440/24	409 (500-½)	440/40	409 (500-¾)
C CIRCLING	720-1 689 (700-1)	760-1 729 (800-1)	1060-3	1029 (1100-3)

NW-1, 12 SEP 2019 to 10 OCT 2019

NW-1, 12 SEP 2019 to 10 OCT 2019