

PORTLAND, OREGON


TACAN RWY 28L

TACAN CBU Chan 29	APCH CRS 275°	Rwy ldg 11,000 TDZE 23 Arpt Elev 31
--------------------------	----------------------	--

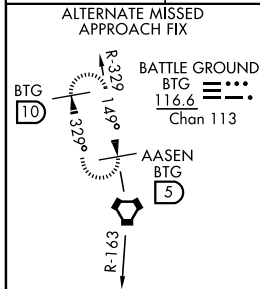
AL-330 [USAF]

PORTLAND INTL (KPDX)

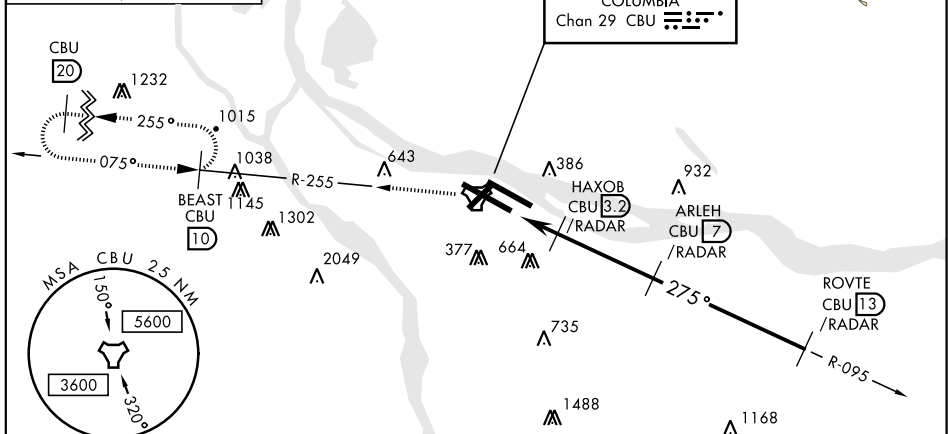
⚠ *When ALS inop, increase CAT AB RVR to 50 and vis to 1 mile, CAT C vis to 1½ miles, CAT D vis to ¾ miles, CAT E vis to 2 miles
⚠ **When VGSI rwy 28R inop, circling rwy 28R NA at night.

MALSR  **† MISSED APPROACH:** Climbing left turn to 4000 via CBU TACAN R-255 to BEAST INT/ CBU 10 DME and hold or when directed by ATC.

ATIS 128.35 269.9	PORTLAND APP CON 124.35 299.2	PORTLAND TOWER 118.7 257.8 Rwy 10L-28R 123.775 251.125 Rwy 3-21, 10R-28L	GND CON 121.9 348.6	CLNC DEL 120.125 318.1
-----------------------------	---	--	-------------------------------	----------------------------------



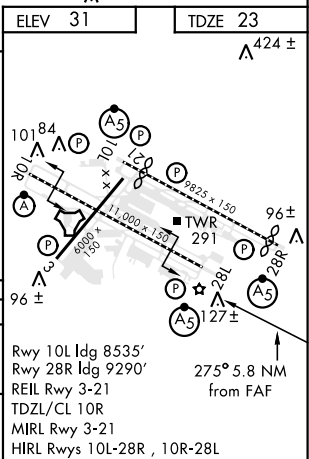
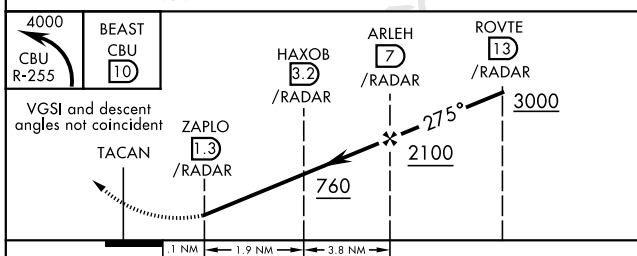
† ALTERNATE MISSED APPROACH: Climb to 4300 via BTG VORTAC R-163 to BTG then via BTG R-329 to AASEN INT and hold.



NW-1, 12 SEP 2019 to 10 OCT 2019

NW-1, 12 SEP 2019 to 10 OCT 2019

RADAR REQUIRED



PORTLAND, OREGON
Amdt 1 18OCT12

45°35'N-122°36'W

PORTLAND INTL (KPDX)

TACAN RWY 28L