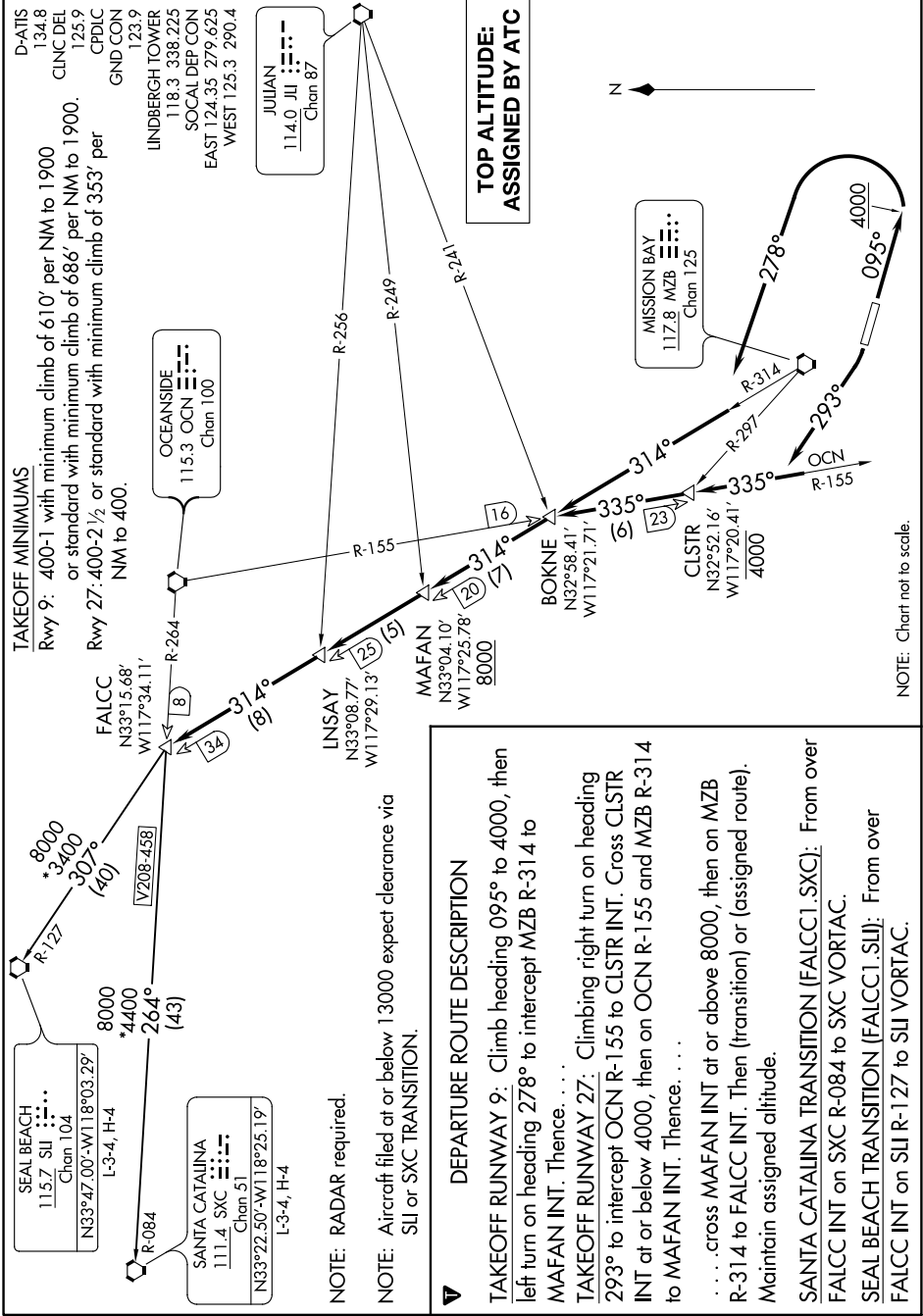


FALCC ONE DEPARTURE

AL-373 (FAA)

SAN DIEGO INTL (SAN)
SAN DIEGO, CALIFORNIA

SW-3, 12 SEP 2019 to 10 OCT 2019



FALCC ONE DEPARTURE

SAN DIEGO, CALIFORNIA
SAN DIEGO INTL (SAN)

SW-3, 12 SEP 2019 to 10 OCT 2019

NOTE: Chart not to scale.

DEPARTURE ROUTE DESCRIPTION

TAKEOFF RUNWAY 9: Climb heading 095° to 4000, then left turn on heading 278° to intercept MZB R-314 to MAFAN INT. Thence...

TAKEOFF RUNWAY 27: Climbing right turn on heading 293° to intercept OCN R-155 to CLSTR INT. Cross CLSTR INT at or below 4000, then on OCN R-155 and MZB R-314 to MAFAN INT. Thence...

... cross MAFAN INT at or above 8000, then on MZB R-314 to FALCC INT. Then (transition) or (assigned route). Maintain assigned altitude.

SANTA CATALINA TRANSITION (FALCC1.SXC): From over FALCC INT on SXC R-084 to SXC VORTAC.

SEAL BEACH TRANSITION (FALCC1.SLI): From over FALCC INT on SLI R-127 to SLI VORTAC.

NOTE: RADAR required.

NOTE: Aircraft filed at or below 13000 expect clearance via SLI or SXC TRANSITION.

**TOP ALTITUDE:
ASSIGNED BY ATC**