

LOC/DME I-SAN	APP CRS	Rwy Idg	7280
111.55	095°	TDZE	17
Chan 52 (Y)		Apt Elev	17

ILS Z or LOC Z RWY 9

SAN DIEGO INTL (SAN)

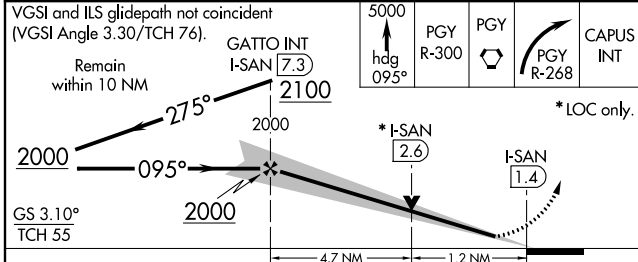
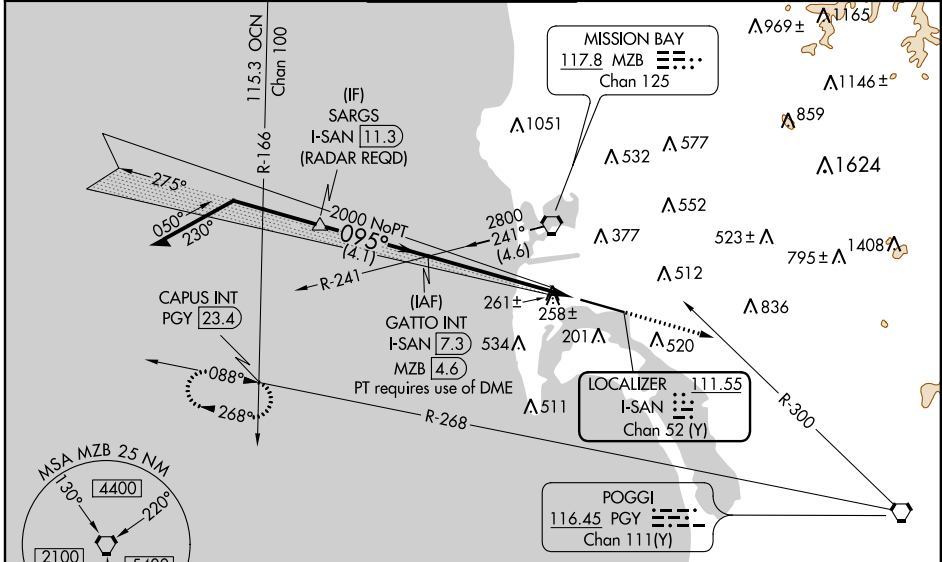
⚠ Circling NA north of Rwy 9-27. Autopilot coupled approach NA below 530. When Circling to Rwy 27 at night, operational VGSI required, remain on or above VGSI glidepath until threshold. For inop ALS, increase S-LOC Cat A/B visibility to RVR 5500, and Cat C/D to 1 3/8 SM. LOC only: Rwy 9 helicopter visibility reduction below RVR 4000 NA.

MALSR



MISSED APPROACH: Climb to 5000 on heading 095° and on PGY VORTAC R-300 to PGY VORTAC, then right turn on PGY VORTAC R-268 to CAPUS INT/23.4 DME and hold.
 #Missed approach requires minimum climb of 280 feet per NM to 3800; if unable to meet climb gradient, see ILS Y or LOC Y RWY 9.

D-ATIS	SOCAL APP CON	LINDBERGH TOWER	GND CON	CLNC DEL	CPDLC
134.8	119.6 363.1 (WEST) 124.35 279.625 (EAST)	118.3 338.225	123.9	125.9	



ELEV 17	D TDZE 17
TDZ/CL Rwys 9 and 27	
HIRL Rwy 9-27	
FAF to MAP 5.9 NM	
Knots	60 90 120 150 180
Min:Sec	5:54 3:56 2:57 2:22 1:58

CATEGORY	A	B	C	D
S-ILS 9#	217/18 200 (200-1/2)			
S-LOC 9	520/40	503 (600-3/4)	520/55	503 (600-1)
C CIRCLING	800-1 783 (800-1)	820-1 803 (900-1)	820-2 1/4 803 (900-2 1/4)	940-3 923 (1000-3)

SW-3, 12 SEP 2019 to 10 OCT 2019

SW-3, 12 SEP 2019 to 10 OCT 2019