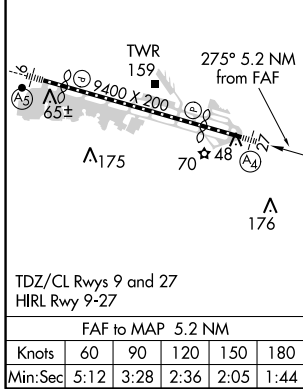
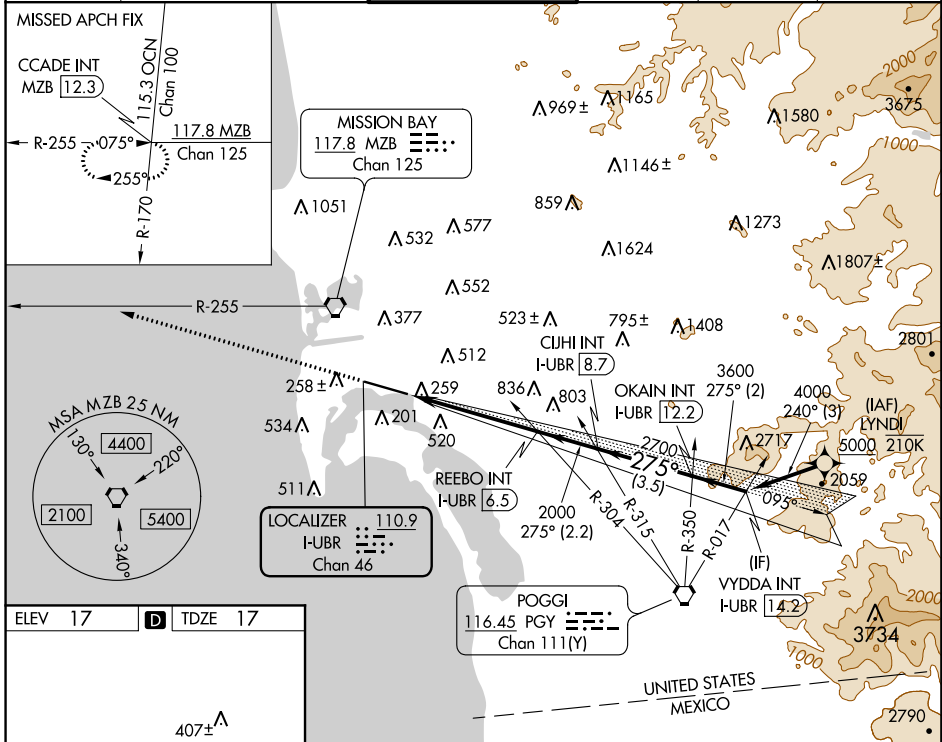


LOC/DME I-UBR 110.9 Chan 46	APP CRS 275°	Rwy Idg TDZE Apt Elev	7590 17 17
---	------------------------	-----------------------------	---------------------------------------

LOC RWY 27

SAN DIEGO INTL (SAN)

From LYNDI: RNAV 1-DME/DME/IRU or GPS required.		MAIS ④	MISSED APPROACH: Climb to 2500 on heading 275° and on MZB VORTAC R-255 to CCADE INT/MZB 12.3 DME and hold.
RNAV 1-DME/DME/IRU or GPS required for procedure entry.			
<p>▼ Rwy 27 helicopter visibility reduction below 1 SM NA. Circling NA north of Rwy 9-27. Inop table does not apply to Cats A and B. For inop ALS, increase S-27 Cats C and D visibility to 1 1/8 SM.</p>			
D-ATIS 134.8	SOCAL APP CON 119.6 363.1 (WEST) 124.35 279.625 (EAST)	LINDBERGH TOWER 118.3 338.225	GND CON 123.9
		CLNC DEL 125.9	CPDLC



ELEV 17	D	TDZE 17
<p>407± TWR 159 275° 5.2 NM from FAF A0 65± A175 70 A48 A176</p>		
<p>2500 hdg 275°</p>		
MZB R-255		CCADE INT
VYDDA INT I-UBR 14.2		OKAIN INT I-UBR 12.2
REEBO INT I-UBR 6.5		CUJHI INT I-UBR 8.7
I-UBR 1.3		2700
2000		3600
4000		275°
5.2 NM		2.2 NM
3.5 NM		2 NM
CATEGORY	A	B
S-27	680-1	663 (700-1)
	680-1 3/4	663 (700-1 1/4)
CIRCLING	820-1	803 (900-1)
	840-2 1/2	823 (900-2 1/2)
	940-3	923 (1000-3)

SW-3, 12 SEP 2019 to 10 OCT 2019

SW-3, 12 SEP 2019 to 10 OCT 2019