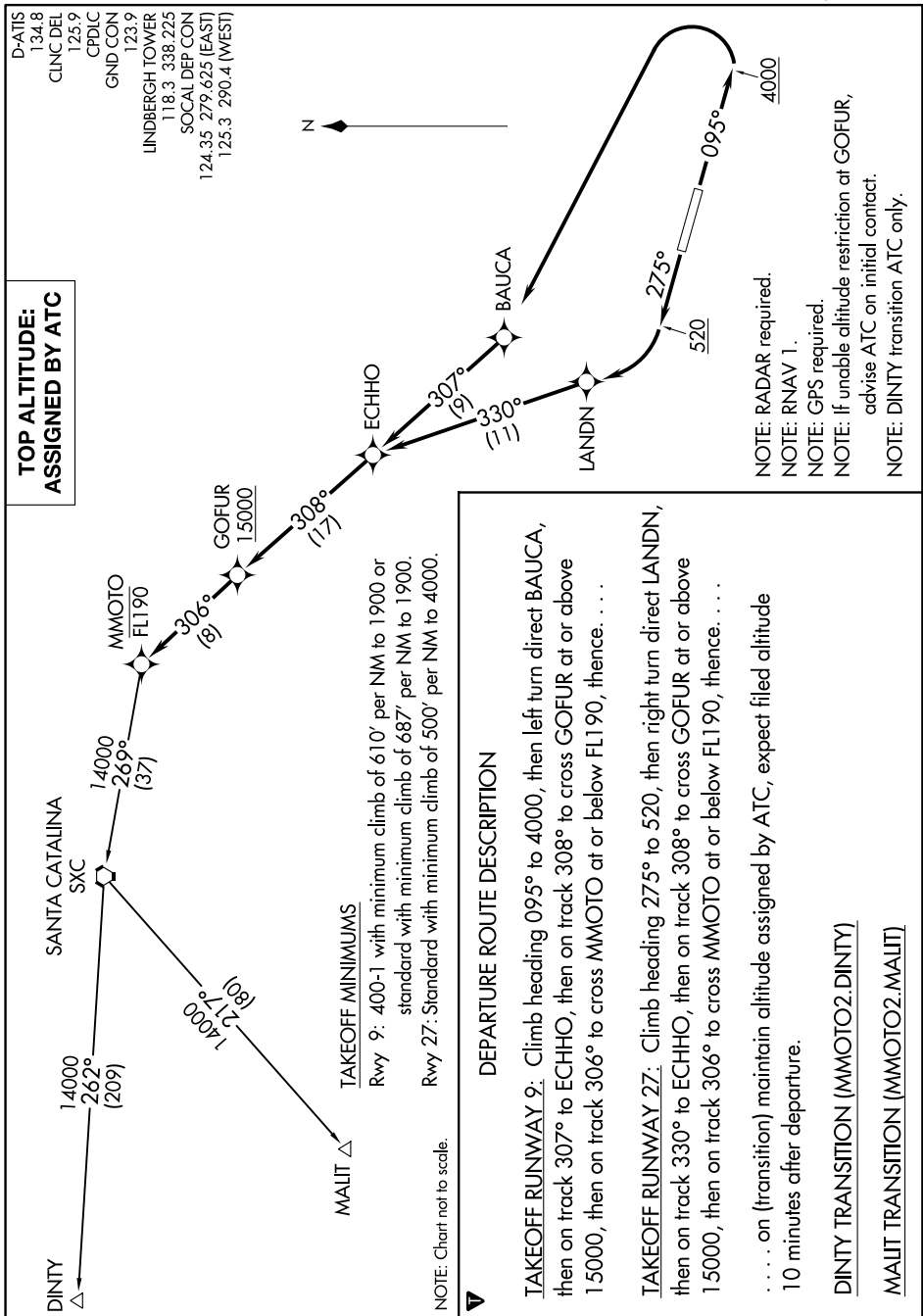


SW-3, 12 SEP 2019 to 10 OCT 2019



**TOP ALTITUDE:
ASSIGNED BY ATC**

D-ATIS
134.8
CLNC DEL
125.9
CPDLC
GND CON
123.9
LINDERBERG TOWER
118.3 338.225
SOCAL DEP CON
124.35 279.625 (EAST)
125.3 290.4 (WEST)

NOTE: RADAR required.
NOTE: RNAV 1.
NOTE: GPS required.
NOTE: If unable altitude restriction at GOFUR, advise ATC on initial contact.
NOTE: DINTY transition ATC only.

TAKEOFF MINIMUMS
Rwy 9: 400-1 with minimum climb of 610' per NM to 1900 or standard with minimum climb of 687' per NM to 1900.
Rwy 27: Standard with minimum climb of 500' per NM to 4000.

NOTE: Chart not to scale.

DEPARTURE ROUTE DESCRIPTION

TAKEOFF RUNWAY 9: Climb heading 095° to 4000, then left turn direct BAUCA, then on track 307° to ECHHO, then on track 308° to cross GOFUR at or above 15000, then on track 306° to cross MMOTO at or below FL190, thence. . . .

TAKEOFF RUNWAY 27: Climb heading 275° to 520, then right turn direct LANDN, then on track 330° to ECHHO, then on track 308° to cross GOFUR at or above 15000, then on track 306° to cross MMOTO at or below FL190, thence. . . .

. . . on (transition) maintain altitude assigned by ATC, expect filed altitude 10 minutes after departure.

DINTY TRANSITION (MMOTO2.DINTY)
MALIT TRANSITION (MMOTO2.MALIT)

SW-3, 12 SEP 2019 to 10 OCT 2019