

(ZZ0002.ZZ000) 18032

# ZZ000 TWO DEPARTURE (RNAV)

AL-373 (FAA)

SAN DIEGO INTL (S.A.N)  
SAN DIEGO, CALIFORNIA

SW-3, 12 SEP 2019 to 10 OCT 2019

## DEPARTURE ROUTE DESCRIPTION

**TAKEOFF RUNWAY 27:** Climb heading 275° to 520 then direct to cross JETTI at or below 12000, then left turn direct ZZ000, thence . . . . .

. . . . . on (transition). Turbojets maintain FL230, turboprops maintain 15000, expect filed altitude 10 minutes after departure.

CENZA TRANSITION (ZZ0002.CENZA)

IMPERIAL TRANSITION (ZZ0002.IPL)

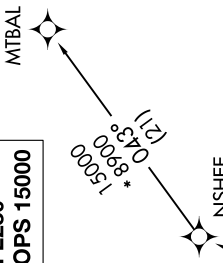
MTBAL TRANSITION (ZZ0002.MTBAL)

### TAKEOFF MINIMUMS

Rwy 27: Standard with minimum climb of 500' per NM to 520.

**TOP ALTITUDE:**  
**JETS FL230**  
**TURBOPROPS 15000**

D-ATIS 134.8  
CLNC DEL 125.9  
CPDLC 123.9  
GND CON 123.9  
LINDBERGH TOWER 118.3 338.225  
SOCAL DEP CON 125.15 317.55



NOTE: RADAR required.

NOTE: RNAV 1.

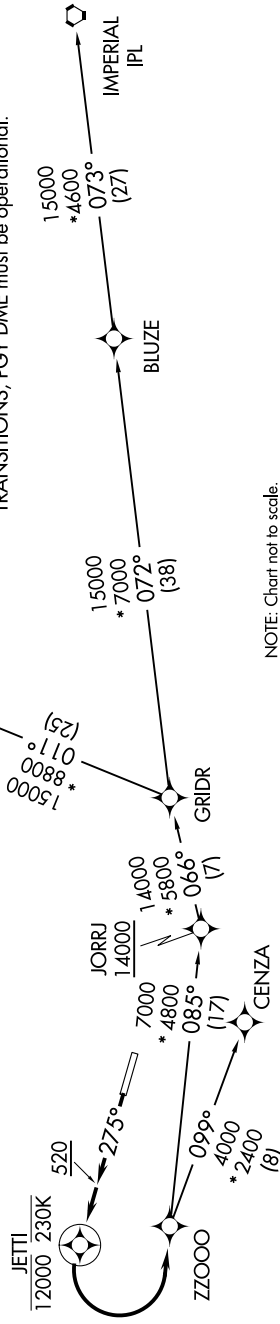
NOTE: DME/DME/IRU or GPS required.

NOTE: Some aircraft may be RADAR vectored to CENZA, JORRJ or GRIDR.

NOTE: If unable ATC altitude restriction at JORRJ, advise ATC on initial contact.

NOTE: Parachute jumping all hours, 13500 and below north of JORRJ at Otay Jump Zone.

NOTE: For non-GPS equipped aircraft using MTBAL or IPL TRANSITIONS, PGY DME must be operational.



NOTE: Chart not to scale.

ZZ000 TWO DEPARTURE (RNAV)  
(ZZ0002.ZZ000) 01FEB18

SAN DIEGO, CALIFORNIA  
SAN DIEGO INTL (S.A.N)

SW-3, 12 SEP 2019 to 10 OCT 2019