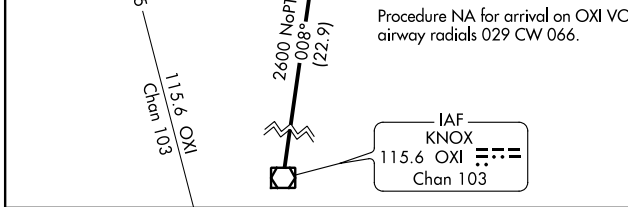
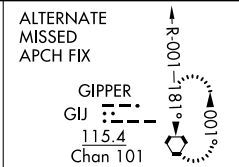
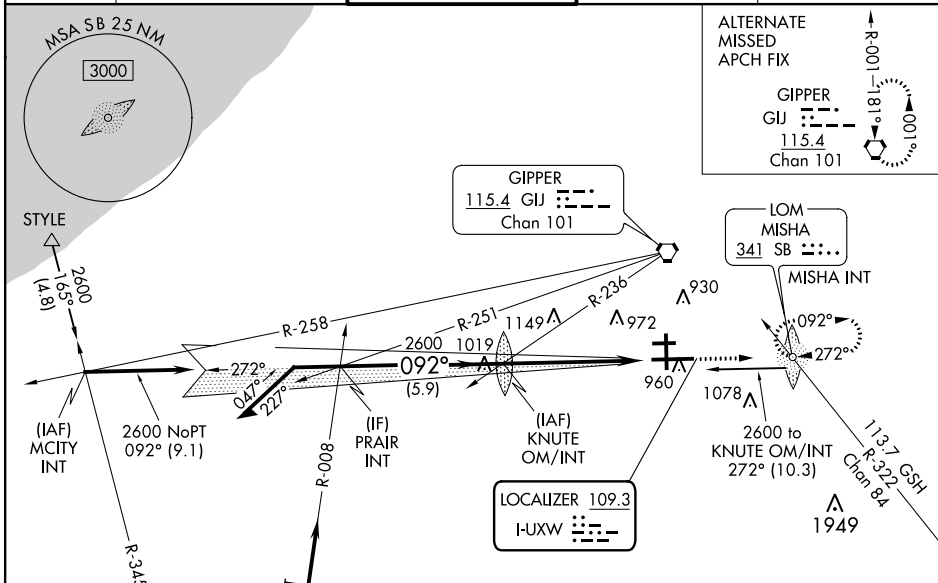


LOC I-UXW 109.3	APP CRS 092°	Rwy Idg 8412 TDZE 790 Apt Elev 798
---------------------------	------------------------	---

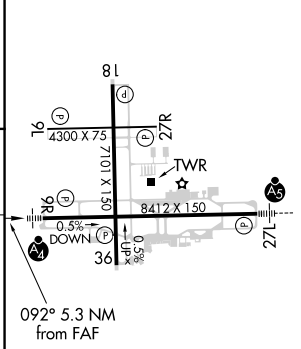
ILS or LOC RWY 9R

SOUTH BEND INTL (SBN)

ADF required.		MALSF	MISSED APPROACH: Climb to 2600 direct MISHA LOM/INT and hold.
Autopilot coupled approach NA below 900. Rwy 9R helicopter visibility reduction below 3/4 SM NA. Inop table does not apply to S-ILS all Cats.			
ATIS 120.675	SOUTH BEND APP CON * 118.55 257.8	SOUTH BEND TOWER * 118.9 (CTAF) 0 257.8	GND CON 121.7
			CLNC DEL 121.9



ELEV 798	TDZE 790
----------	----------



CATEGORY	A	B	C	D
S-ILS 9R		990/40	200 (200-3/4)	
S-LOC 9R	1200/40	410 (500-3/4)	1200/60	410 (500-1 1/4)
CIRCLING	1280-1	482 (500-1)	1440-1 3/4	1500-2 1/4
			642 (700-1 3/4)	702 (800-2 1/4)

HIRL Rwy 9R-27L	
MIRL Rwy 18-36	
MIRL Rwy 9L-27R	
FAF to MAP 5.3 NM	
Knots	60 90 120 150 180
Min:Sec	5:18 3:32 2:39 2:07 1:46

EC-2, 12 SEP 2019 to 10 OCT 2019

EC-2, 12 SEP 2019 to 10 OCT 2019