

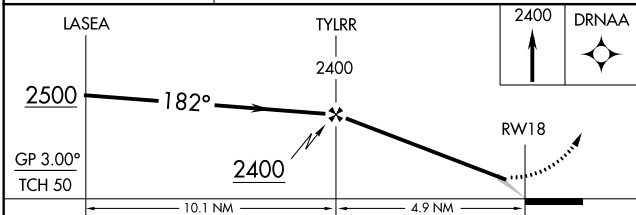
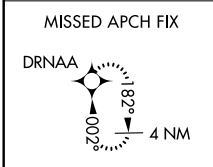
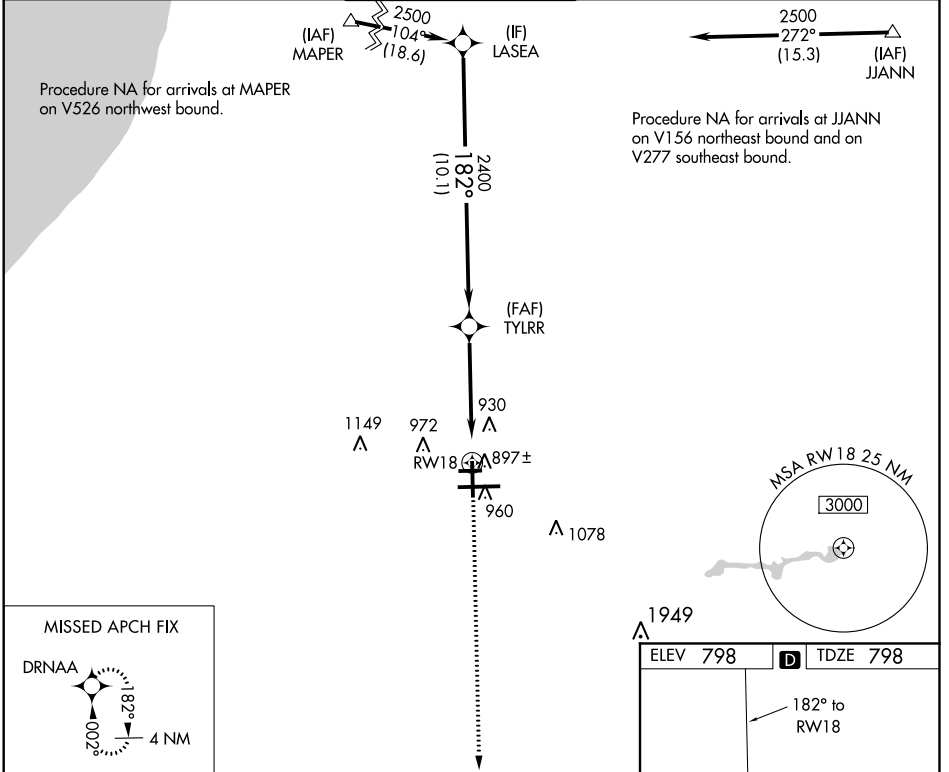
WAAS CH <b>73021</b> <b>W18A</b>	APP CRS <b>182°</b>	Rwy Idg <b>7101</b> TDZE <b>798</b> Apt Elev <b>798</b>
--	------------------------	---

# RNAV (GPS) RWY 18

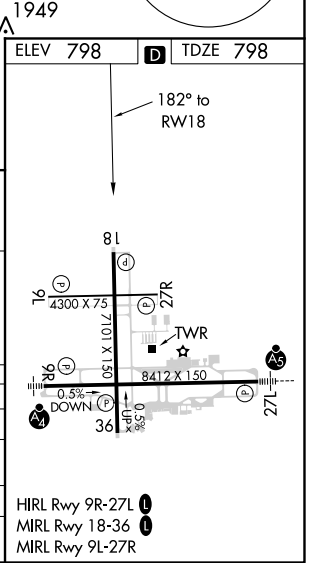
SOUTH BEND INTL (SBN)

RNP APCH.		MISSED APPROACH: Climb to 2400 direct DRNAA and hold.		
For uncompensated Baro-VNAV systems, LNAV/VNAV NA below -19°C or above 54°C.				

ATIS <b>120.675</b>	SOUTH BEND APP CON* <b>118.55 257.8</b>	SOUTH BEND TOWER* <b>118.9 (CTAF) 0 257.8</b>	GND CON <b>121.7</b>	CLNC DEL <b>121.9</b>
------------------------	--	--	-------------------------	--------------------------



CATEGORY	A	B	C	D
LPV DA		1048-1	250 (300-1)	
LNAV/VNAV DA		1057-1	259 (300-1)	
LNAV MDA		1160-1	362 (400-1)	
CIRCLING	1280-1	482 (500-1)	1440-1¾ 642 (700-1¾)	1500-2¼ 702 (800-2¼)



EC-2, 12 SEP 2019 to 10 OCT 2019

EC-2, 12 SEP 2019 to 10 OCT 2019