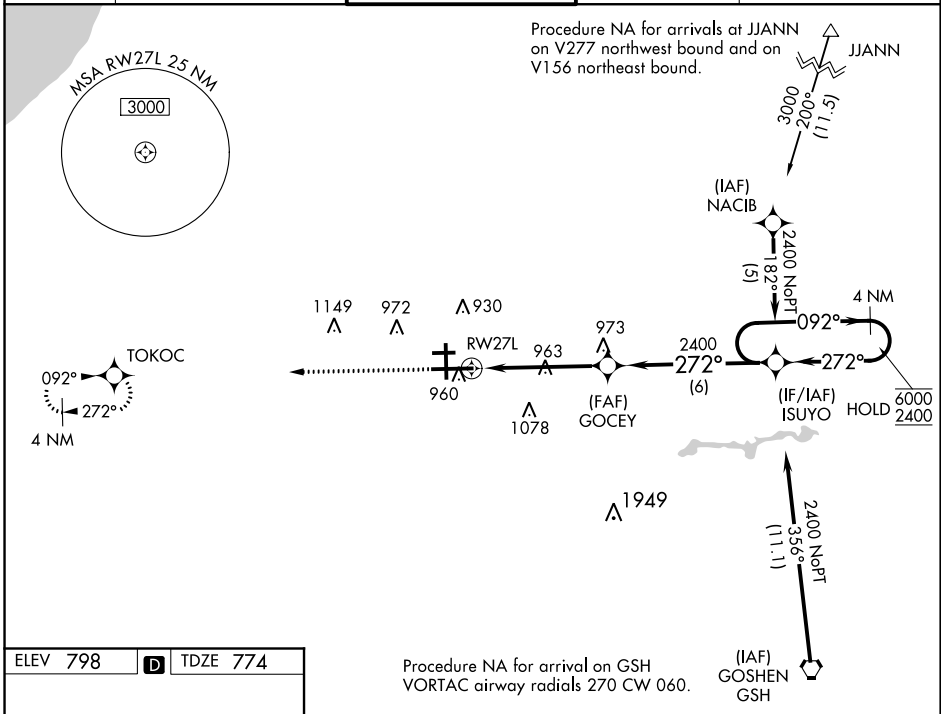


WAAS CH 50108 W27A	APP CRS 272°	Rwy Idg TDZE 774 Apt Elev 798
--	------------------------	---

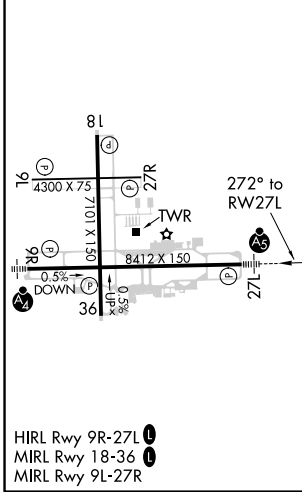
RNAV (GPS) RWY 27L

SOUTH BEND INTL (SBN)

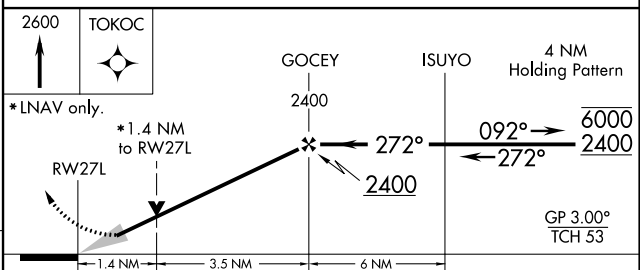
RNP APCH: ▼ For uncompensated Baro-VNAV systems, LNAV/VNAV NA below -19°C or 54°C. For inop ALS, increase LNAV Cat C/D visibility to 1½ SM. ▲		MALSR AS	MISSED APPROACH: Climb to 2600 direct TOKOC and hold.	
ATIS 120.675	SOUTH BEND APP CON* 118.55 257.8	SOUTH BEND TOWER* 118.9 (CTAF) 257.8	GND CON 121.7	CLNC DEL 121.9



ELEV 798	D	TDZE 774
----------	----------	----------



SOUTH BEND, INDIANA
Orig-B 13SEP18



CATEGORY	A	B	C	D
LPV DA		1030/24	256 (300-½)	
LNAV/VNAV DA		1160/40	386 (400-¾)	
LNAV MDA	1260/24	486 (500-½)	1260/50	486 (500-1)
C CIRCLING	1280-1	482 (500-1)	1440-1¾ 642 (700-1¾)	1500-2¼ 702 (800-2¼)

EC-2: 12 SEP 2019 to 10 OCT 2019

EC-2: 12 SEP 2019 to 10 OCT 2019