

WAAS CH <b>69514</b> <b>W36A</b>	APP CRS <b>002°</b>	Rwy Idg <b>7101</b> TDZE <b>778</b> Apt Elev <b>799</b>
--	------------------------	---

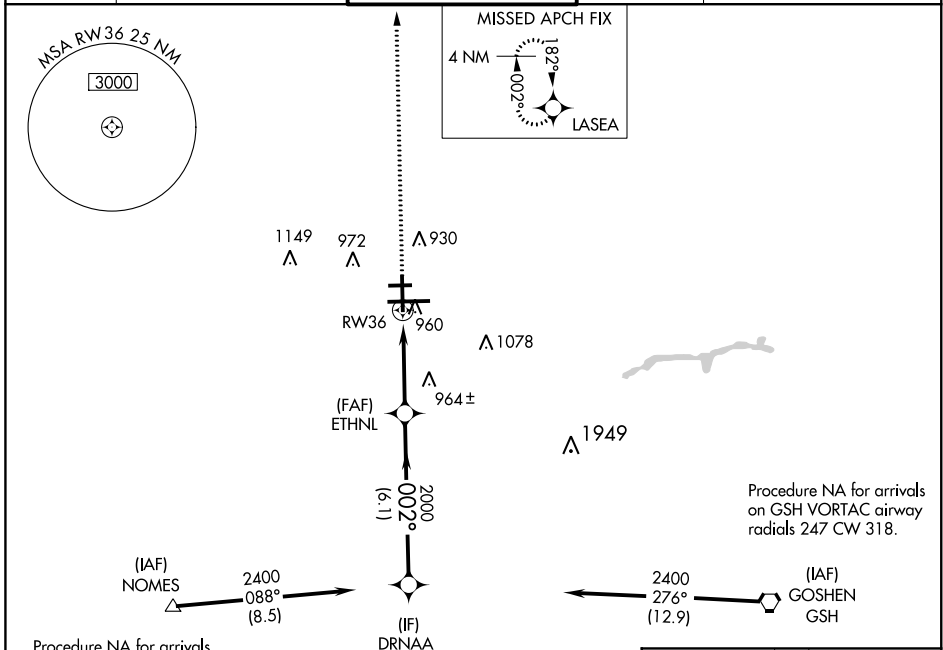
# RNAV (GPS) RWY 36

SOUTH BEND INTL (SBN)

**⚠** For uncompensated Baro-VNAV systems, LNAV/VNAV NA below -16°C (4°F) or above 46°C (114°F).  
**⚠** DME/DME RNP-0.3 NA.

MISSED APPROACH: Climb to 2400 direct LASEA and hold.

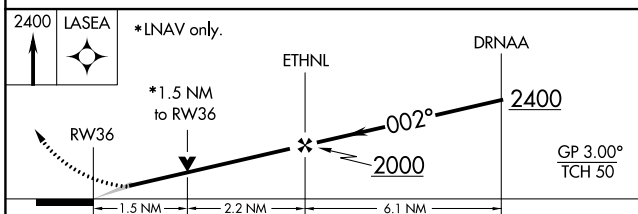
ATIS <b>120.675</b>	SOUTH BEND APP CON ★ <b>118.55 257.8</b>	SOUTH BEND TOWER ★ <b>118.9 (CTAF) 0 257.8</b>	GND CON <b>121.7</b>	CLNC DEL <b>121.9</b>
------------------------	---	---	-------------------------	--------------------------



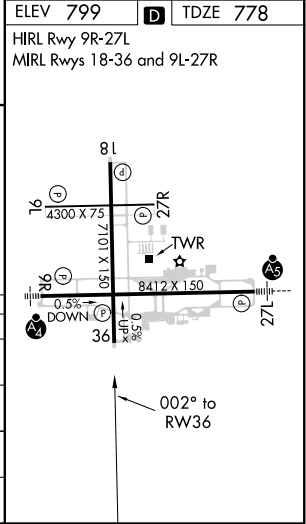
Procedure NA for arrivals at NOMES via V156 southwest bound.

Procedure NA for arrivals on GSH VORTAC airway radials 247 CW 318.

ELEV 799	<b>D</b> TDZE 778
HIRL Rwy 9R-27L	
MIRL Rwy 18-36 and 9L-27R	



CATEGORY	A	B	C	D
LPV DA	1028-1 250 (300-1)			
LNAV/VNAV DA	1230-1 <sup>3</sup> / <sub>4</sub> 452 (500-1 <sup>3</sup> / <sub>4</sub> )			
LNAV MDA	1280-1 502 (500-1)	1280-1 <sup>1</sup> / <sub>2</sub> 502 (500-1 <sup>1</sup> / <sub>2</sub> )		
CIRCLING	1280-1 481 (500-1)	1280-1 <sup>1</sup> / <sub>2</sub> 481 (500-1 <sup>1</sup> / <sub>2</sub> )	1360-2 561 (600-2)	



EC-2, 12 SEP 2019 to 10 OCT 2019

EC-2, 12 SEP 2019 to 10 OCT 2019