

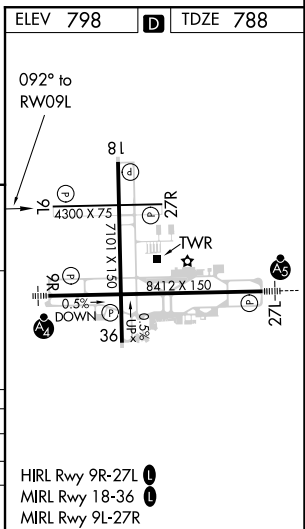
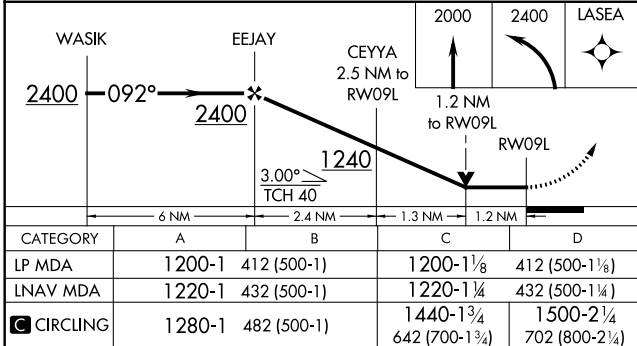
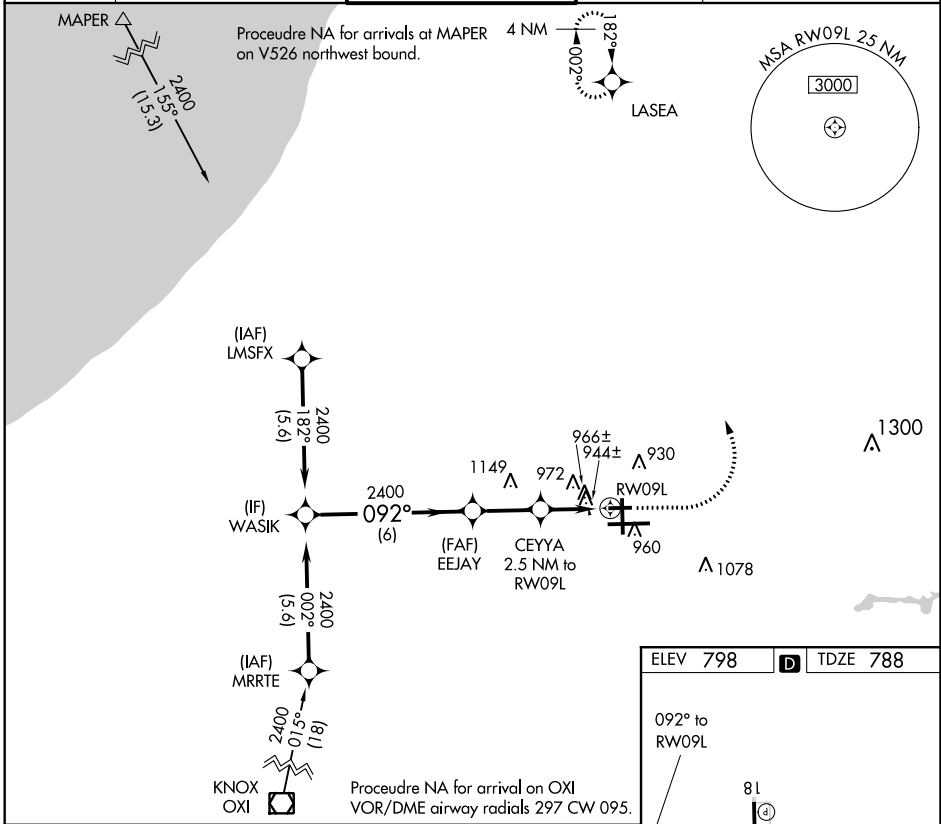
WAAS CH 70542 W09A	APP CRS 092°	Rwy Idg TDZE 4300 788 Apt Elev 798
--	------------------------	--

RNAV (GPS) RWY 9L

SOUTH BEND INTL (SBN)

RNP APCH.	MISSED APPROACH: Climb to 2000 then climbing left turn to 2400 direct LASEA and hold.
Rwy 9L helicopter visibility reduction below 3/4 SM NA.	

ATIS 120.675	SOUTH BEND APP CON* 118.55 257.8	SOUTH BEND TOWER* 118.9 (CTAF) 0 257.8	GND CON 121.7	CLNC DEL 121.9
------------------------	--	--	-------------------------	--------------------------



EC-2, 12 SEP 2019 to 10 OCT 2019

EC-2, 12 SEP 2019 to 10 OCT 2019

- HIRL Rwy 9R-27L
- MIRL Rwy 18-36
- MIRL Rwy 9L-27R