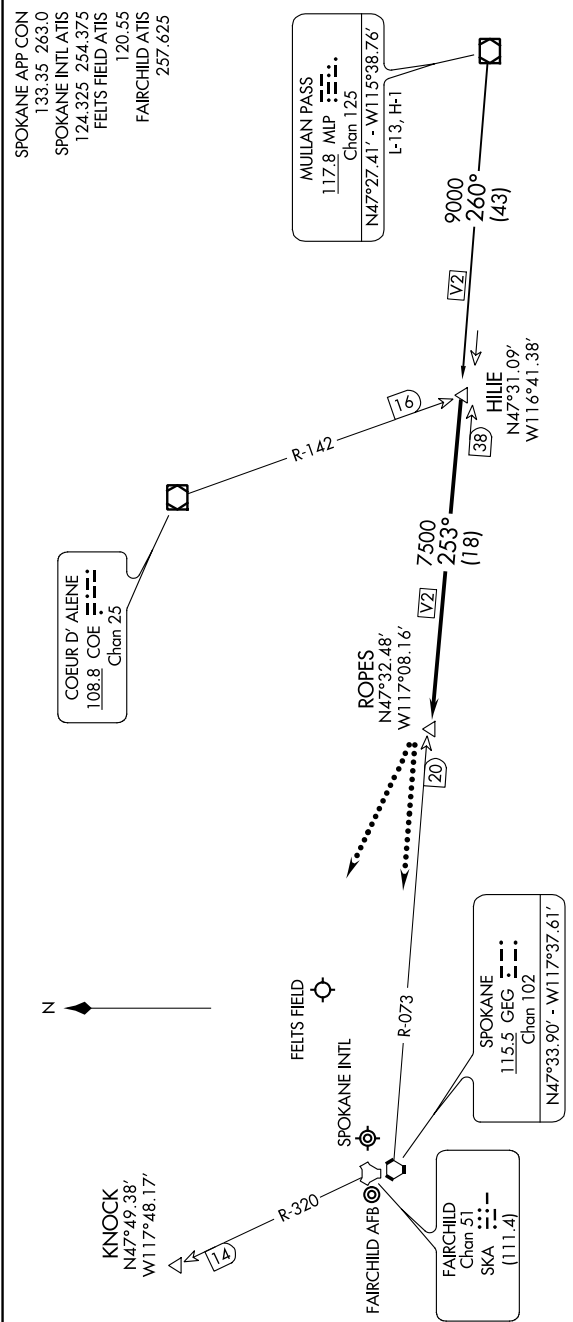


# HILIE TWO ARRIVAL (HILIE.HILIE2)

ST-403 (FAA)

SPOKANE, WASHINGTON

NW-1, 12 SEP 2019 to 10 OCT 2019



SPOKANE APP CON  
133.35 263.0  
SPOKANE INTL ATIS  
124.325 254.375  
FELTS FIELD ATIS  
120.55  
FAIRCHILD ATIS  
257.625

COEUR D'ALENE  
108.8 COE ---  
Chan 25

MULLAN PASS  
117.8 MLP ---  
Chan 125  
N47°27.41' - W115°38.76'  
L-13, H-1

SPOKANE  
115.5 GEG ---  
Chan 102  
N47°33.90' - W117°37.61'

FAIRCHILD  
Chan 51  
SKA ---  
(111.4)

NOTE: DME and RADAR required.  
NOTE: Chart not to scale.

## ARRIVAL ROUTE DESCRIPTION

MULLAN PASS TRANSITION (MLP.HILIE2): From over MLP VOR/DME via MLP R-260 to HILIE INT. Thence. . . .

. . . . From over HILIE INT via GEG R-073 to ROPES. Expect radar vectors to final approach course.

LOST COMMUNICATIONS: After ROPES:

Landing Spokane Intl or Felts Field: Proceed to GEG VORTAC via GEG R-073, maintain last assigned altitude to GEG.

Landing Fairchild AFB: Proceed to KNOCK via direct, maintain last assigned altitude to KNOCK.

# HILIE TWO ARRIVAL (HILIE.HILIE2)

SPOKANE, WASHINGTON

NW-1, 12 SEP 2019 to 10 OCT 2019