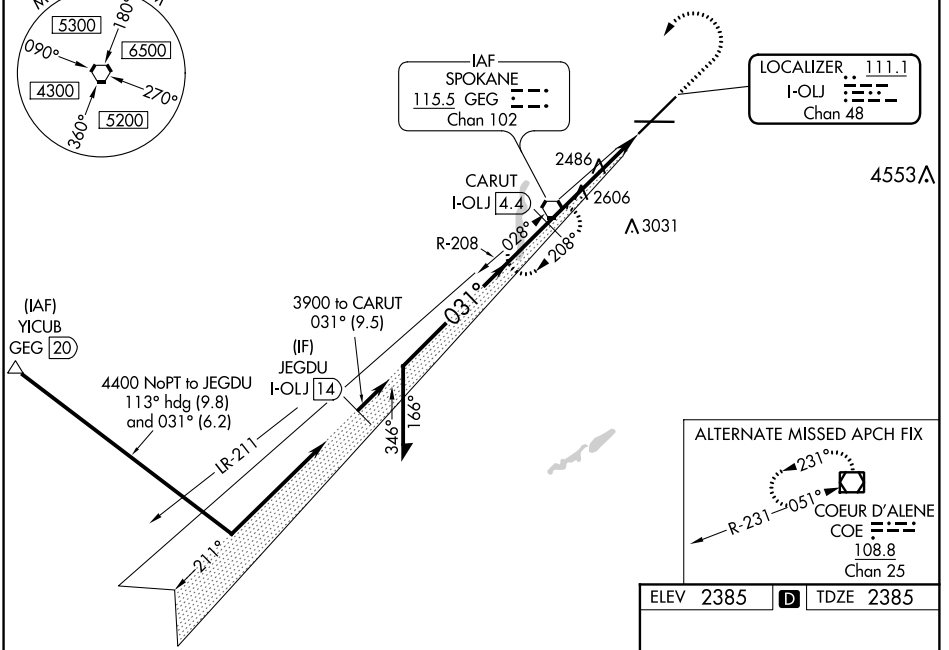
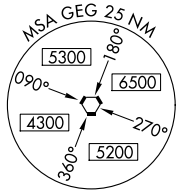


LOC/DME I-OLJ 111.1 Chan 48	APP CRS 031°	Rwy Idg TDZE 2385 Apt Elev 2385
--	------------------------	---

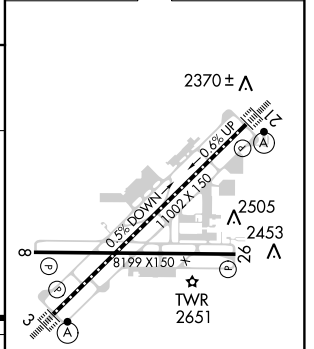
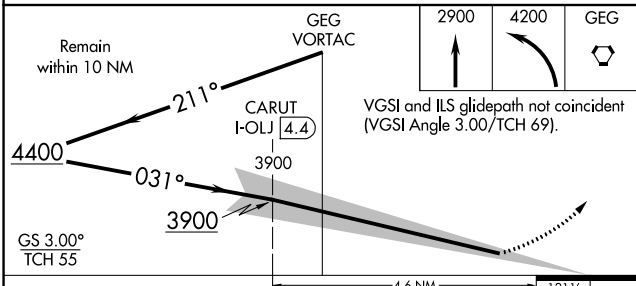
ILS RWY 3 (CAT II & III)

SPOKANE INTL (GEG)

▼ ▲ CAT II: RVR 1000 authorized with specific OPSPEC, MSPEC, or LOA approval and use of autoland or HUD to touchdown.	ALS-F-2 	MISSED APPROACH: Climb to 2900 then climbing left turn to 4200 direct GEG VORTAC and hold.		
	ATIS 124.325 254.375	SPOKANE APP CON 123.75 282.25 (205°-025°) 133.35 263.0 (026°-204°)	SPOKANE TOWER 118.3 278.3	GND CON 121.9 348.6



ELEV 2385	D	TDZE 2385
-----------	----------	-----------



CATEGORY	A	B	C	D
S-ILS 3	CAT II RA 104/12 100 DA 2485			
S-ILS 3	CAT III RVR 03			

CATEGORY II & III ILS - SPECIAL AIRCREW & AIRCRAFT CERTIFICATION REQUIRED

TDZ/CL Rwy 3 and 21
 REL Rwy 8 and 26
 HIRL Rwy 3-21
 MIRL Rwy 8-26

NW-1, 12 SEP 2019 to 10 OCT 2019

NW-1, 12 SEP 2019 to 10 OCT 2019