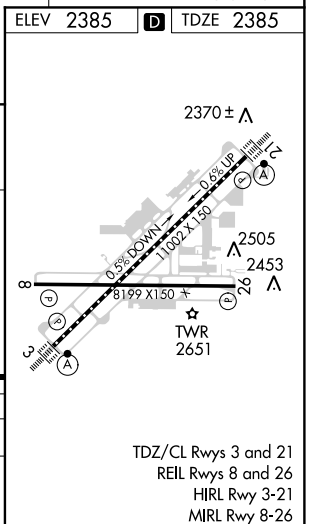
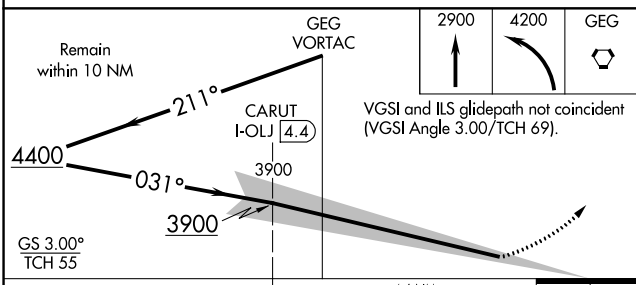
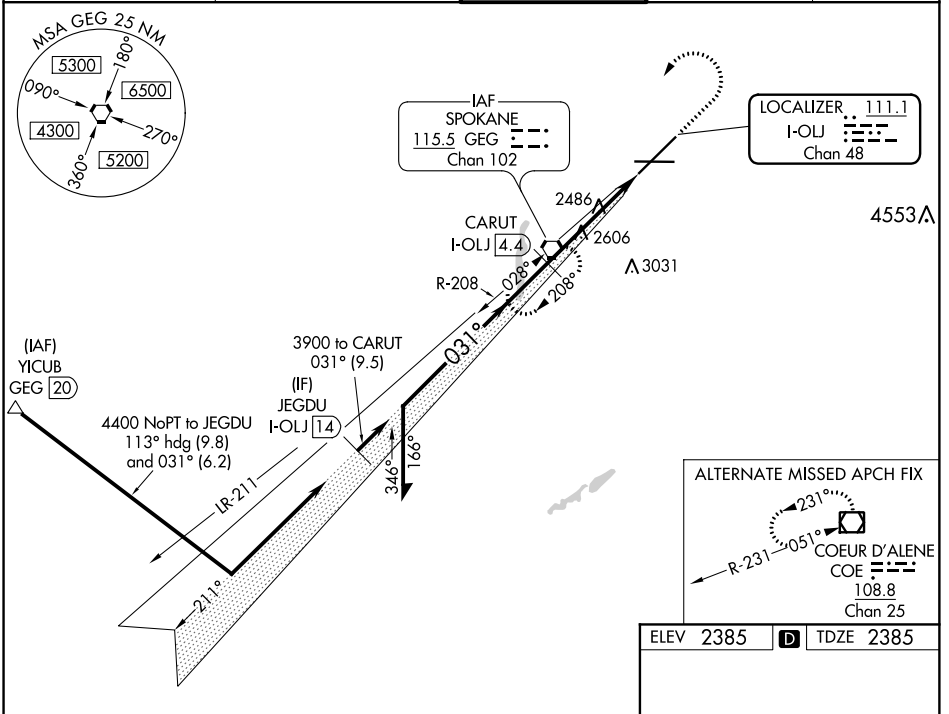


LOC/DME I-OLJ <b>111.1</b> Chan <b>48</b>	APP CRS <b>031°</b>	Rwy Idg <b>11002</b> TDZE <b>2385</b> Apt Elev <b>2385</b>
---	------------------------	--

# ILS RWY 3 (SA CAT I)

SPOKANE INTL (GEG)

Requires specific OPSPEC, MSPEC, or LOA approval and use of HUD to DH.	ALS-F-2 	MISSED APPROACH: Climb to 2900 then climbing left turn to 4200 direct GEG VORTAC and hold.		
	ATIS <b>124.325 254.375</b>	SPOKANE APP CON <b>123.75 282.25</b> (205°-025°) <b>133.35 263.0</b> (026°-204°)	<b>SPOKANE TOWER</b> <b>118.3 278.3</b>	GND CON <b>121.9 348.6</b>



CATEGORY	A	B	C	D
S-ILS 3	RA 154/14 150 DA 2535			

**SA CATEGORY I ILS - SPECIAL AIRCREW & AIRCRAFT CERTIFICATION REQUIRED**

NW-1, 12 SEP 2019 to 10 OCT 2019

NW-1, 12 SEP 2019 to 10 OCT 2019