

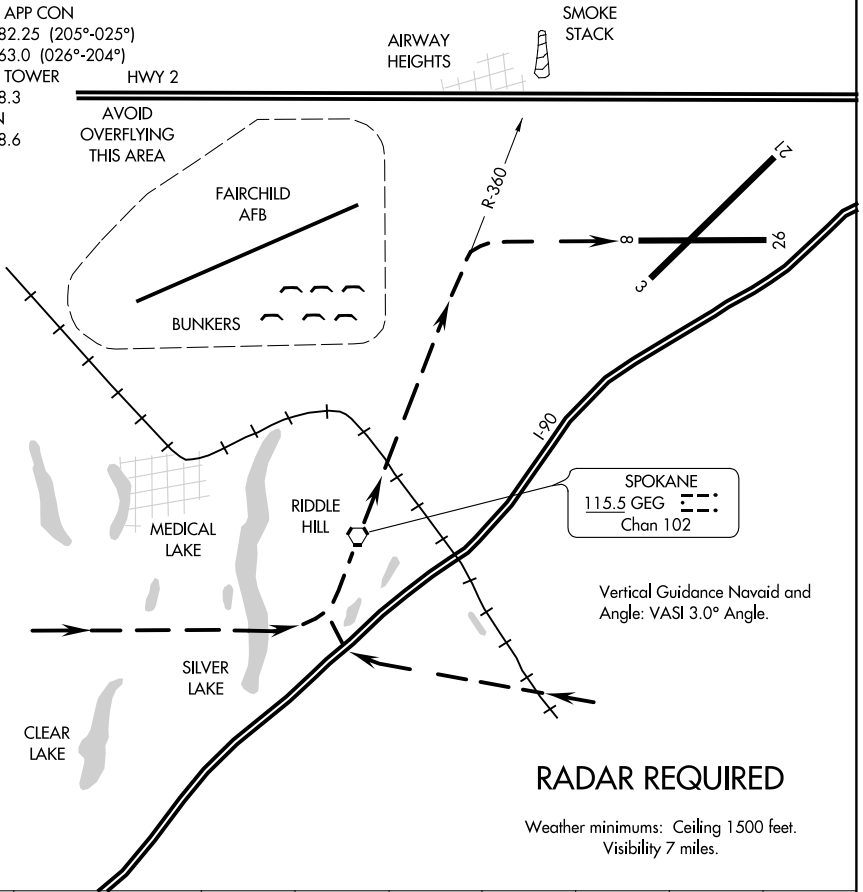
19003

# RIDDLE HILL VISUAL RWY 8

AL-403 (FAA)

SPOKANE INTL (GEG)  
SPOKANE, WASHINGTON

ATIS  
 124.325 254.375  
 SPOKANE APP CON  
 123.75 282.25 (205°-025°)  
 133.35 263.0 (026°-204°)  
 SPOKANE TOWER  
 118.3 278.3  
 GND CON  
 121.9 348.6  
 CLNC DEL  
 127.55  
 UNICOM  
 122.950



## RADAR REQUIRED

Weather minimums: Ceiling 1500 feet.  
 Visibility 7 miles.

NW-1, 12 SEP 2019 to 10 OCT 2019

NW-1, 12 SEP 2019 to 10 OCT 2019

### RIDDLE HILL VISUAL APPROACH RWY 8

PROCEDURE NOT AUTHORIZED AT NIGHT.

# RIDDLE HILL VISUAL RWY 8

Amdt 1 03JAN19

47°37'N - 117°32'W

SPOKANE, WASHINGTON  
SPOKANE INTL (GEG)