

APP CRS	Rwy Idg	<b>8199</b>
<b>257°</b>	TDZE	<b>2372</b>
	Apt Elev	<b>2385</b>

# RNAV (RNP) Z RWY 26

SPOKANE INTL (GEG)

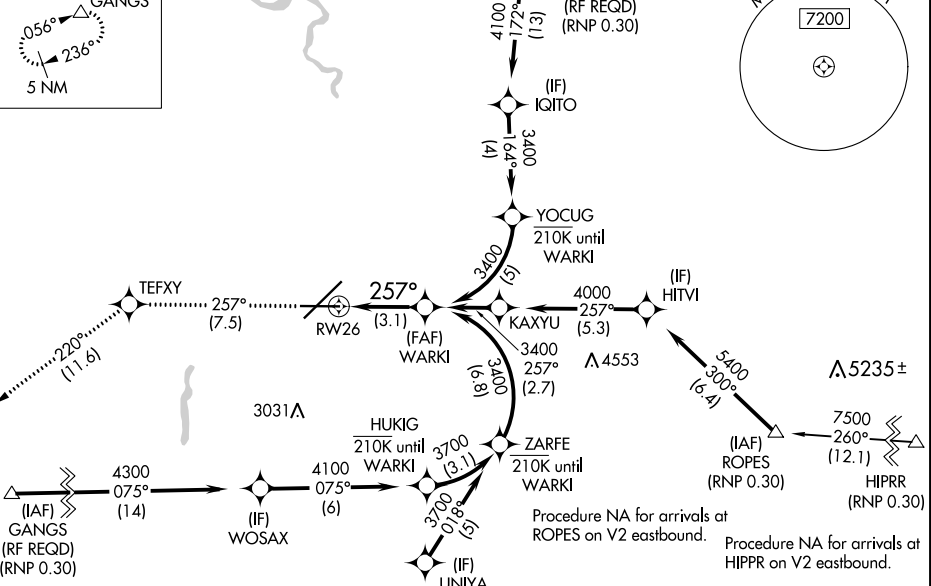
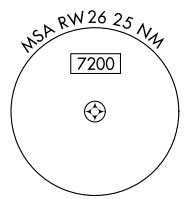
RNP AR APCH. MISSED APPROACH: Climb to 5000 on track 257° to TEFXY and on track 220° to GANGS and hold.

▼ For uncompensated Baro-VNAV systems, procedure NA below -17°C or above 54°C.

ATIS	SPOKANE APP CON	SPOKANE TOWER	GND CON	CLNC DEL
<b>124.325 254.375</b>	<b>123.75 282.25 (205°-025°)</b> <b>133.35 263.0 (026°-204°)</b>	<b>118.3 278.3</b>	<b>121.9 348.6</b>	<b>127.55</b>

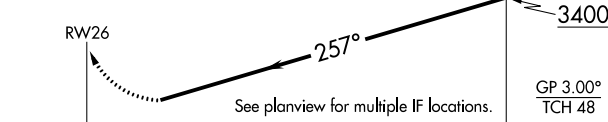
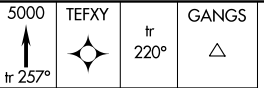


Procedure NA for arrivals at JOMRU on V112 northbound.

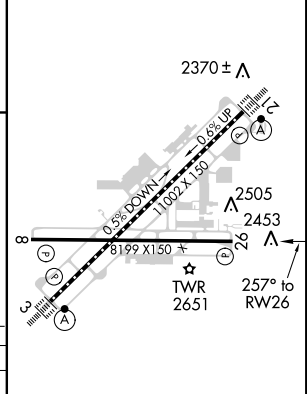


Procedure NA for arrivals at GANGS on V2-448 southwest bound.

Procedure NA for arrivals at ATOXE on V253 southeast bound.



ELEV 2385	TDZE 2372
-----------	-----------



CATEGORY	A	B	C	D
RNP 0.11 DA		2745-1¼	373 (400-1¼)	
RNP 0.30 DA		2795-1¾	423 (500-1¾)	

TDZ/CL Rwy 3 and 21  
REIL Rwy 8 and 26  
HIRL Rwy 3-21  
MIRL Rwy 8-26

## AUTHORIZATION REQUIRED

NW-1, 12 SEP 2019 to 10 OCT 2019

NW-1, 12 SEP 2019 to 10 OCT 2019