

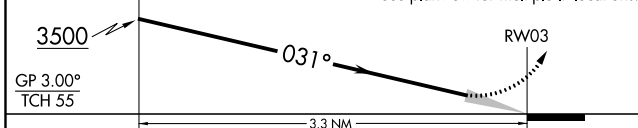
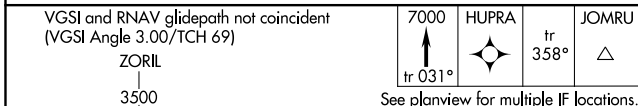
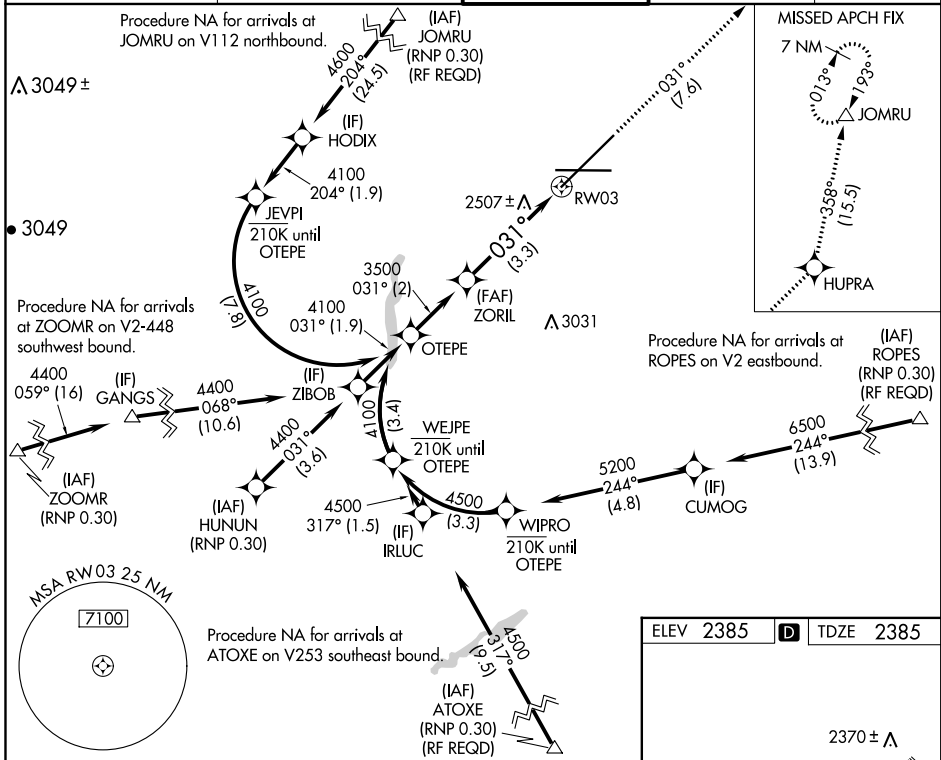
APP CRS	Rwy Idg	11002
031°	TDZE	2385
	Apt Elev	2385

RNAV (RNP) Z RWY 3

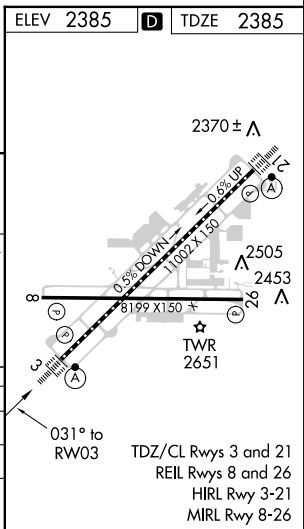
SPOKANE INTL (GEG)

RNP AR APCH.	ALSF-2	MISSED APPROACH: Climb to 7000 on track 031° to HUPRA and on track 358° to JOMRU and hold.
▼ For uncompensated Baro-VNAV systems, procedure NA below -18°C or above 53°C.		

ATIS 124.325 254.375	SPOKANE APP CON 123.75 282.25 (205°-025°) 133.35 263.0 (026°-204°)	SPOKANE TOWER 118.3 278.3	GND CON 121.9 348.6	CLNC DEL 127.55
--------------------------------	--	-------------------------------------	-------------------------------	---------------------------



CATEGORY	A	B	C	D
RNP 0.11 DA		2716/26	331 (400-½)	
RNP 0.30 DA		2842/45	457 (500-¾)	



AUTHORIZATION REQUIRED

NW-1, 12 SEP 2019 to 10 OCT 2019

NW-1, 12 SEP 2019 to 10 OCT 2019