

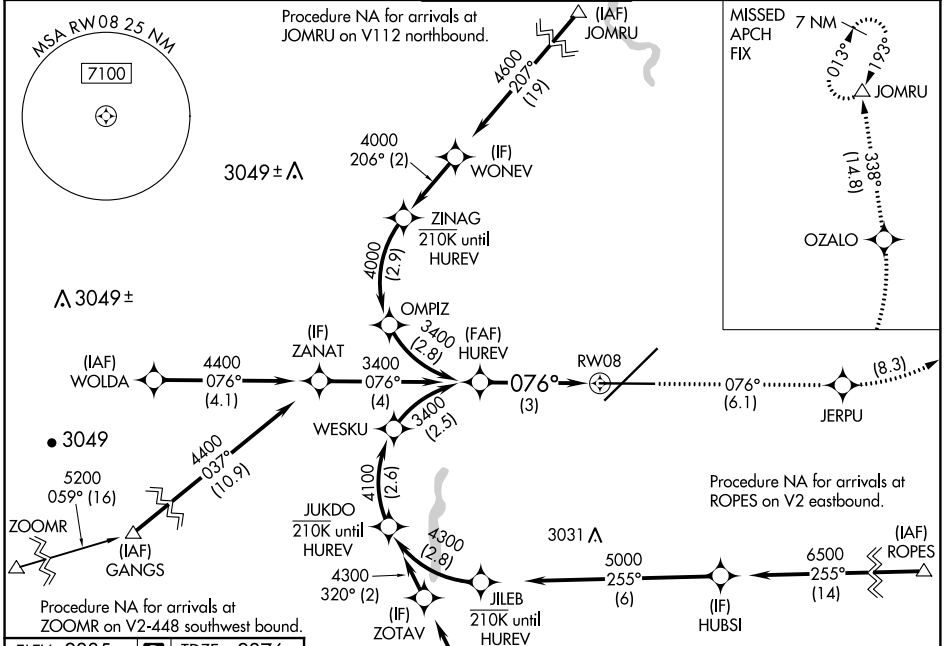
APP CRS	Rwy Idg	8199
076°	TDZE	2376
	Apt Elev	2385

RNAV (RNP) Z RWY 8

SPOKANE INTL (GEG)

RNP AR APCH. RF required.	MISSED APPROACH: Climb to 7000 on track 076° to JERPU, left turn to OZALO, and on track 338° to JOMRU and hold.
▼ For uncompensated Baro-VNAV systems, procedure NA below -18°C or above 53°C.	

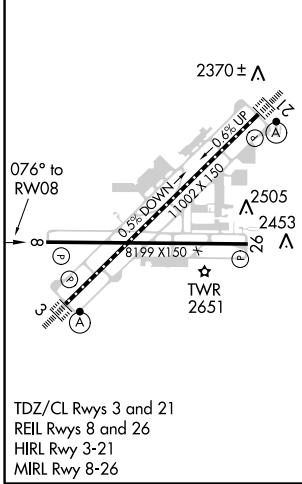
ATIS 124.325 254.375	SPOKANE APP CON 123.75 282.25 (205°-025°) 133.35 263.0 (026°-204°)	SPOKANE TOWER 118.3 278.3	GND CON 121.9 348.6	CLNC DEL 127.55
--------------------------------	--	-------------------------------------	-------------------------------	---------------------------



NW-1, 12 SEP 2019 to 10 OCT 2019

NW-1, 12 SEP 2019 to 10 OCT 2019

ELEV 2385	D	TDZE 2376
-----------	---	-----------



HUREV 3400	7000	JERPU	OZALO	tr 338°	JOMRU
3400	↑ tr 076°	↙	↘		△
GP 3.00°	VGS1 and RNAV glidepath not coincident. (VGS1 Angle 3.00/TCH 45).				
TCH 60	See planview for multiple IF locations.				
3 NM					
CATEGORY	A	B	C	D	
RNP 0.11 DA	2665-7/8 289 (300-7/8)				
RNP 0.30 DA	2869-13/8 493 (500-13/8)				
AUTHORIZATION REQUIRED					