

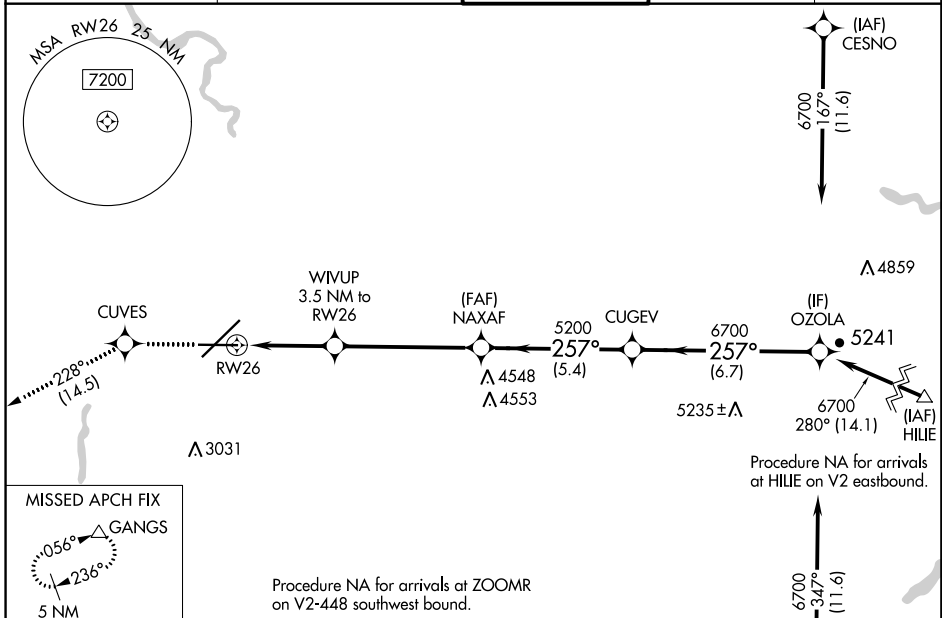
WAAS CH 93501 W26A	APP CRS 257°	Rwy Idg TDZE Apt Elev	8199 2372 2385
---------------------------------	------------------------	-----------------------------	---

RNAV (GPS) Y RWY 26

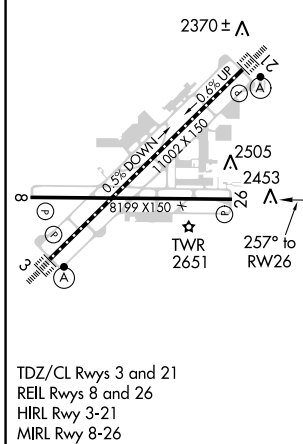
SPOKANE INTL (GEG)

RNP APCH.		MISSED APPROACH: Climb to 5000 direct CUVES and on track 228° to GANGS and hold.	
<p>▼ Rwy 26 helicopter visibility reduction below 3/4 SM NA. ▲ For uncompensated Baro-VNAV systems, LNAV/VNAV NA below -18°C or above 54°C.</p>			

ATIS 124.325 254.375	SPOKANE APP CON 123.75 282.25 (205°-025°) 133.35 263.0 (026°-204°)	SPOKANE TOWER 118.3 278.3	GND CON 121.9 348.6	CLNC DEL 127.55
--------------------------------	--	-------------------------------------	-------------------------------	---------------------------



ELEV 2385	D	TDZE 2372
-----------	----------	-----------



ZOOMR	8000	076°	(52.9)
5000	CUVES	tr 228°	GANGS
*LNAV only. WIVUP 3.5 NM to RW26			
*1.6 NM to RW26			
3520*			
5200			
6700			
GP 3.00° TCH 48			
CATEGORY	A	B	C
LPV DA	2688-1		316 (400-1)
LNAV/VNAV DA	2911-1½		539 (600-1½)
LNAV MDA	2920-1	548 (600-1)	2920-1½ 548 (600-1½)
C CIRCLING	2960-1	2980-1	3300-2¾ 3400-3
	575 (600-1)	595 (600-1)	915 (1000-2¾) 1015 (1100-3)

NW-1, 12 SEP 2019 to 10 OCT 2019

NW-1, 12 SEP 2019 to 10 OCT 2019