

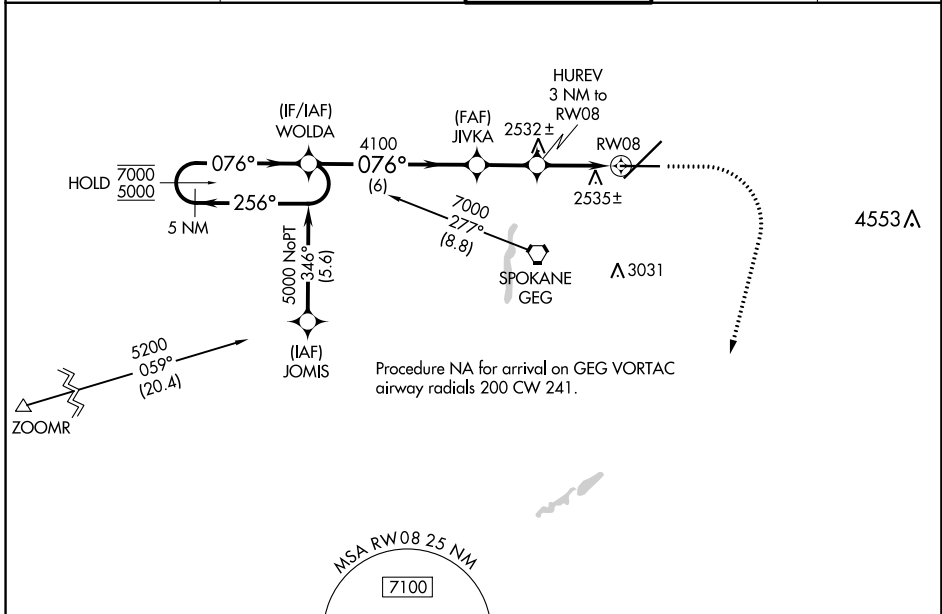
WAAS CH 48801 W08A	APP CRS 076°	Rwy Idg TDZE Apt Elev	8199 2376 2385
--	------------------------	-----------------------------	---

RNAV (GPS) Y RWY 8

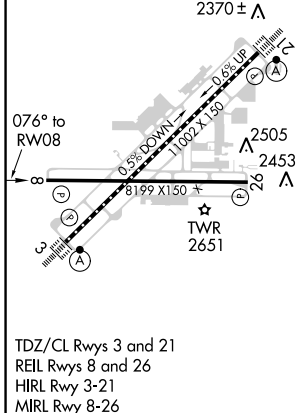
SPOKANE INTL (GEG)

RNP APCH.	MISSED APPROACH: Climb to 2900, then climbing right turn to 6000 direct ATOXE and hold.
<p>▼ For uncompensated Baro-VNAV systems, LNAV/VNAV NA below -18°C or above 52°C.</p> <p>▲</p>	

ATIS 124.325 254.375	SPOKANE APP CON 123.75 282.25 (205°-025°) 133.35 263.0 (026°-204°)	SPOKANE TOWER 118.3 278.3	GND CON 121.9 348.6	CLNC DEL 127.55
--------------------------------	--	-------------------------------------	-------------------------------	---------------------------



ELEV 2385	D	TDZE 2376
-----------	----------	-----------



5 NM Holding Pattern				WOLDA	JIVKA	HUREV 3 NM to RW08	2900	6000	ATOXE
7000 ← 256°				→ 076°	4100	4100	↑	↘	△
5000 ← 076°				→ 076°	4100	*3400	*1.2 NM to RW08		
GP 3.00° TCH 60				6 NM	2.1 NM	1.8 NM	1.2		
CATEGORY	A	B	C	D					
LPV DA	2576-3/4		200 (200-3/4)						
LNAV/VNAV DA	2834-1 1/2		458 (500-1 1/2)						
LNAV MDA	2800-1	424 (500-1)	2800-1 1/4	424 (500-1 1/4)					

NW-1, 12 SEP 2019 to 10 OCT 2019

NW-1, 12 SEP 2019 to 10 OCT 2019